

## FEWER FUNDS AVAILABLE TO EDUCATE STUDENTS: OVERVIEW OF FY 2012 EDUCATION BUDGET

### K-12 EDUCATION

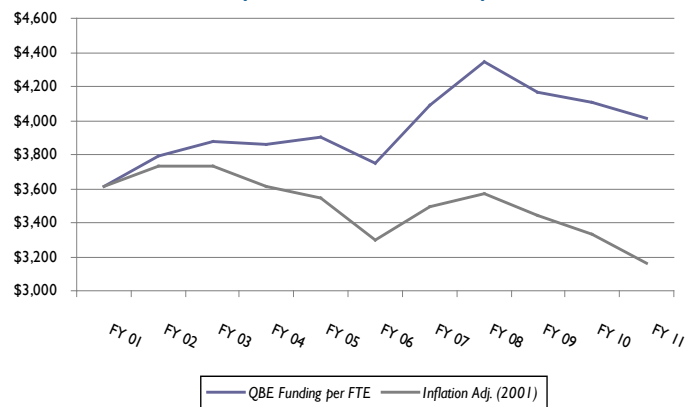
The FY 2012 budget appropriates \$6.96 billion in state funding for K-12 education. With state spending equivalent to FY 2011 levels, federal Recovery Act funding no longer available, and a projected growth in student enrollment, state spending per pupil will fall to its lowest level in over a decade.

#### FY 2012 Budget Highlights

- Loss of American Recovery Act funding (\$141 million).
- QBE program funding cut by \$110.6 million.
- Pupil transportation cut by \$8.3 million.
- Nutrition funding cut by \$2.5 million.
- School nurses funding cut by \$1.1 million.

Since FY 2009, state funding for K-12 education has been cut \$1.2 billion. The FY 2012 budget continues the trend of funding cuts to the Quality Basic Education Program (QBE). In total, school systems will receive \$783 million less in QBE funding for FY 2012 compared to FY 2009.

**K-12 EDUCATION: QBE FUNDING PER PUPIL  
(FY 2001 - FY 2011)**



### K-12 EDUCATION: STATE FUND CHANGES FOR FY 2009 TO FY 2012

	FY 2009 Original Budget	FY 2011 Original Budget	FY 2012 Budget	FY 2011 - FY 2012 Change (\$)	FY 2011 - FY 2012 Change (%)	FY 2009 - FY 2012 Change (\$)	FY 2009 - FY 2012 Change (%)
State General Funds	\$8,196,497,771	\$6,989,931,274	\$6,969,195,136	-\$20,736,138	-0.3%	-\$1,227,302,635	-15.0%
QBE Program	\$6,789,985,513	\$6,189,014,556	\$6,119,150,453	-\$69,864,103	-1.1%	-\$670,835,060	-9.9%
Recovery Funding	\$0	\$140,709,507	\$0	-\$140,709,507	-100.0%	\$0	0.0%
QBE Equalization	\$548,529,543	\$436,158,587	\$436,158,587	\$0	0.0%	-\$112,370,956	-21.6%
<b>Total QBE funding</b>	<b>\$7,338,515,056</b>	<b>\$6,765,882,650</b>	<b>\$6,555,309,040</b>	<b>-\$210,573,610</b>	<b>-3.1%</b>	<b>-\$783,206,016</b>	<b>-10.6%</b>