



Carl Vinson **Institute of Government**

The University of Georgia

The Changing Demographics of Georgia

Matt Hauer,
Carl Vinson Institute
of Government

There are ____ counties in Georgia

1. 155

2. 157

 3. 159

4. 161



Carl Vinson Institute of Government

The University of Georgia

PROMOTING
EXCELLENCE *IN*
GOVERNMENT

What is the fastest growing county in Georgia?

1. Stewart

 **2. Forsyth**

3. Cobb

4. Chatham



Carl Vinson Institute of Government

The University of Georgia

PROMOTING
EXCELLENCE *IN*
GOVERNMENT

What percent of the state's population was born in Georgia?

1. 16.2%

2. 22.8%

3. 43.1%

 4. 55.8%



Carl Vinson Institute of Government

The University of Georgia

PROMOTING
EXCELLENCE *IN*
GOVERNMENT

More people move to Georgia from _____ than any other state

- 
- 1. Florida**
 - 2. Alabama**
 - 3. Texas**
 - 4. Michigan**



_____ people in Georgia speak a foreign language in their home

1. Fewer than 500,000
2. Between 500,000 & 750,000
3. Between 750,000 & 1,000,000
- ➡ 4. More than 1,000,000



Georgia ranks _____ in the nation in terms of household income

1. 13th

2. 18th

 **3. 26th**

4. 31st

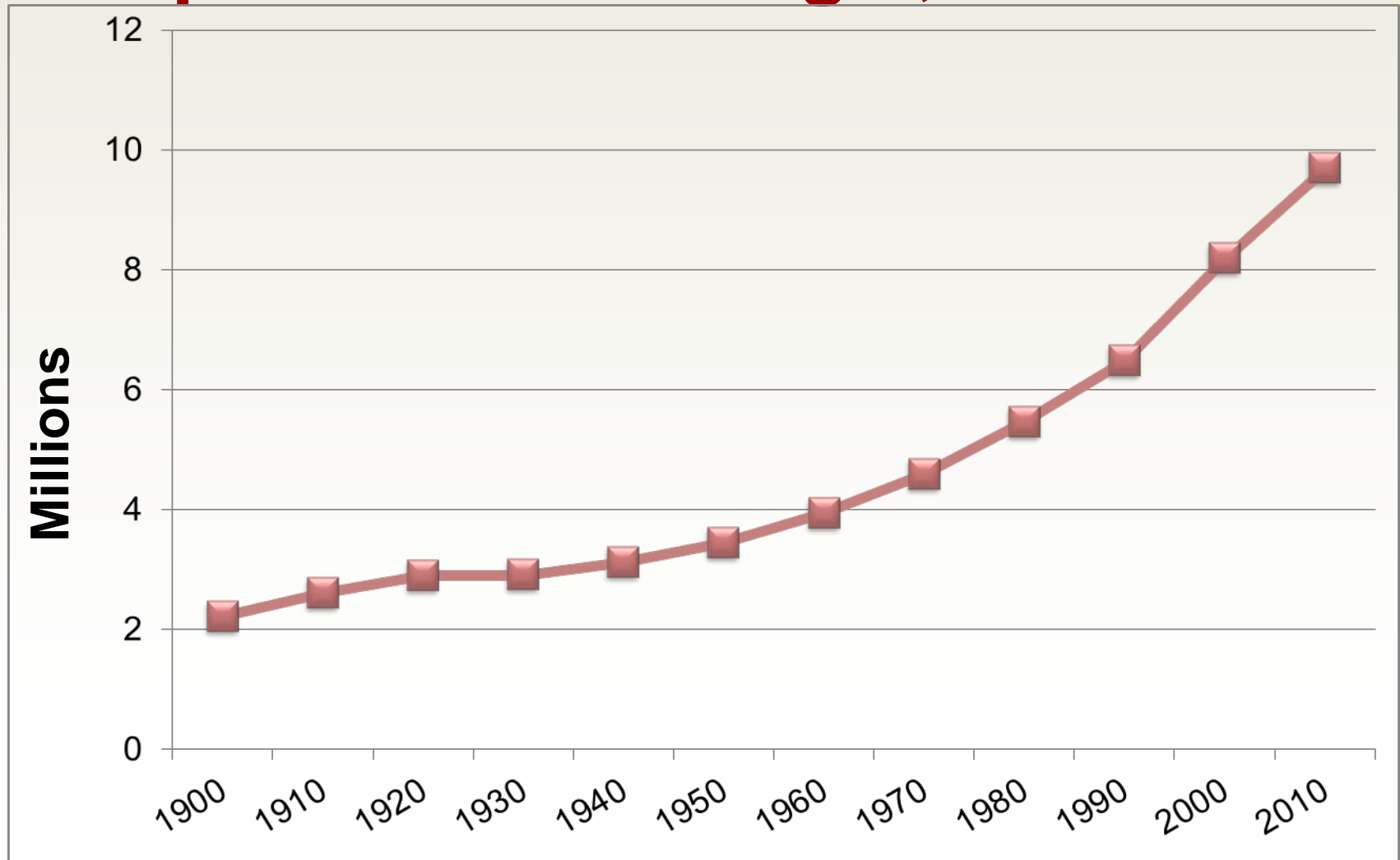


Carl Vinson Institute of Government

The University of Georgia

PROMOTING
EXCELLENCE *IN*
GOVERNMENT

Population of Georgia, 1900–2010



Carl Vinson **Institute of Government**

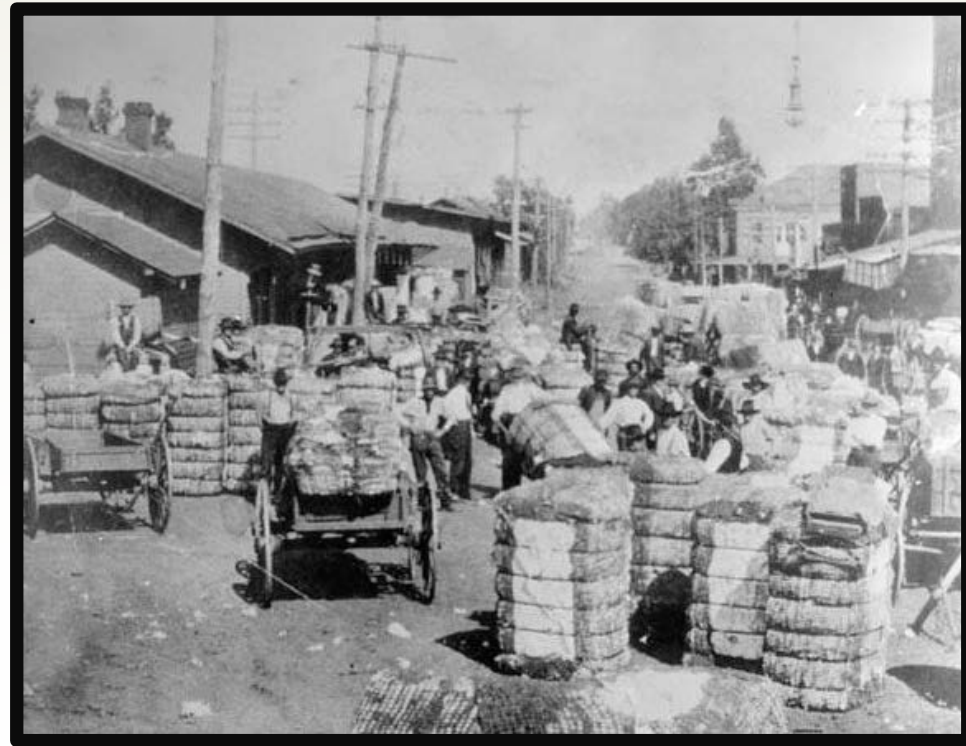
The University of Georgia

PROMOTING
EXCELLENCE *IN*
GOVERNMENT

Two Parts to the 20th Century

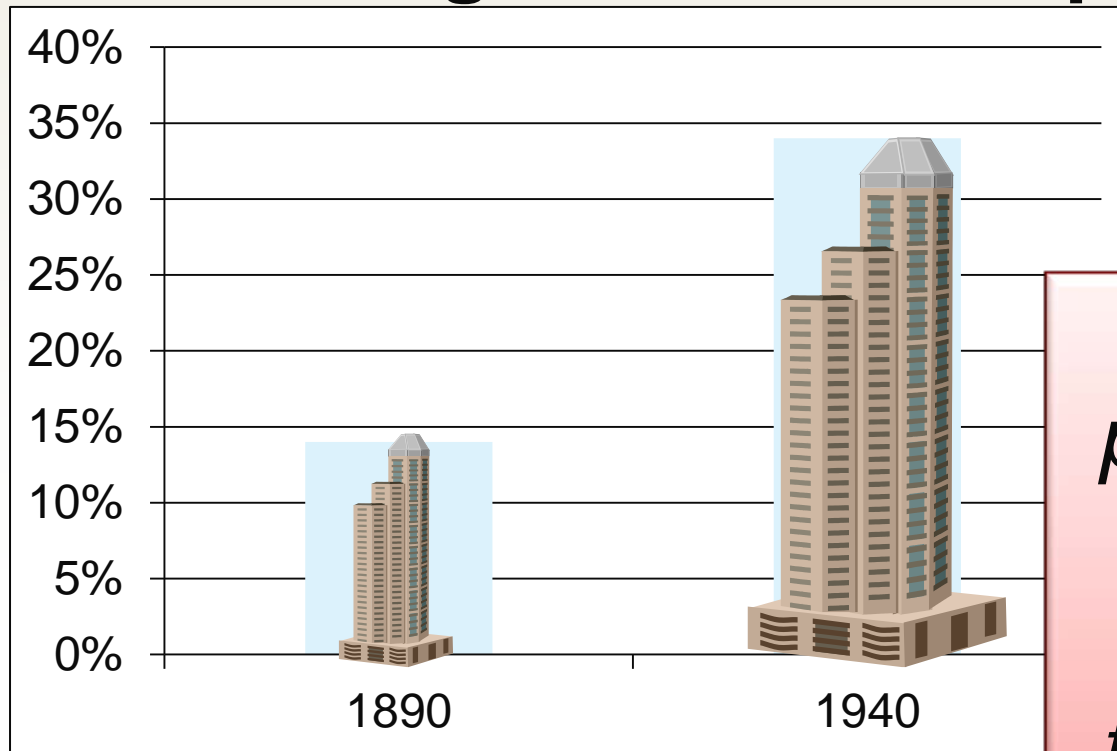
- **The Great Migration, 1920–1970**

- Boll weevil in 1915
- Collapse of cotton market in early 1920's
- Mechanization of agriculture
- Racial discrimination pushed out black farmers



Two Parts to the 20th Century

- Great Migration not unique to Georgia



*U.S. urban
population rises
from 14%
in 1890
to 34% by 1940*

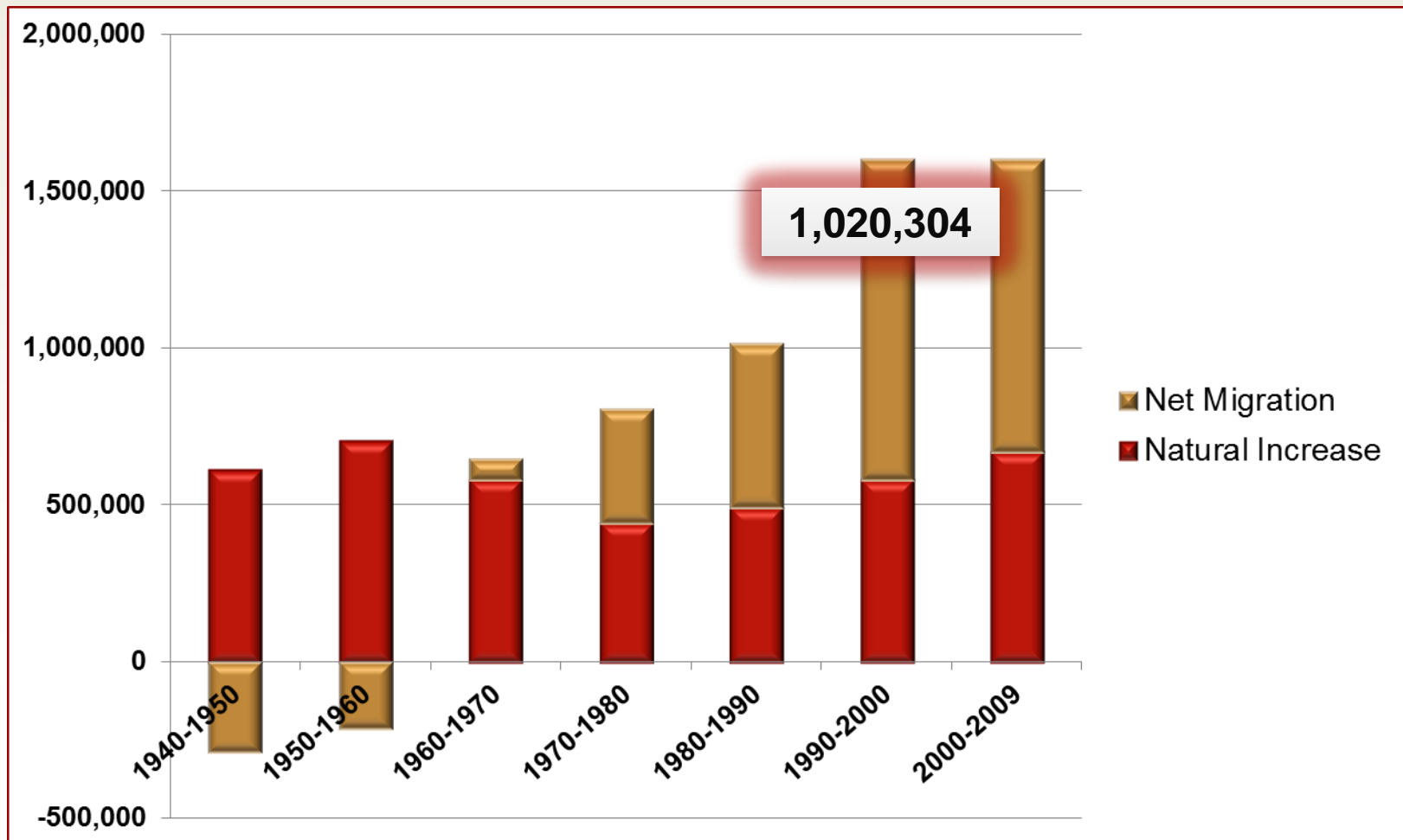


Two Parts to the 20th Century

- **After the Great Migration, 1970–present**
 - Each decade shows larger and more diverse growth
 - Growth is largely fueled by migration



Components of Change, 1940–2009

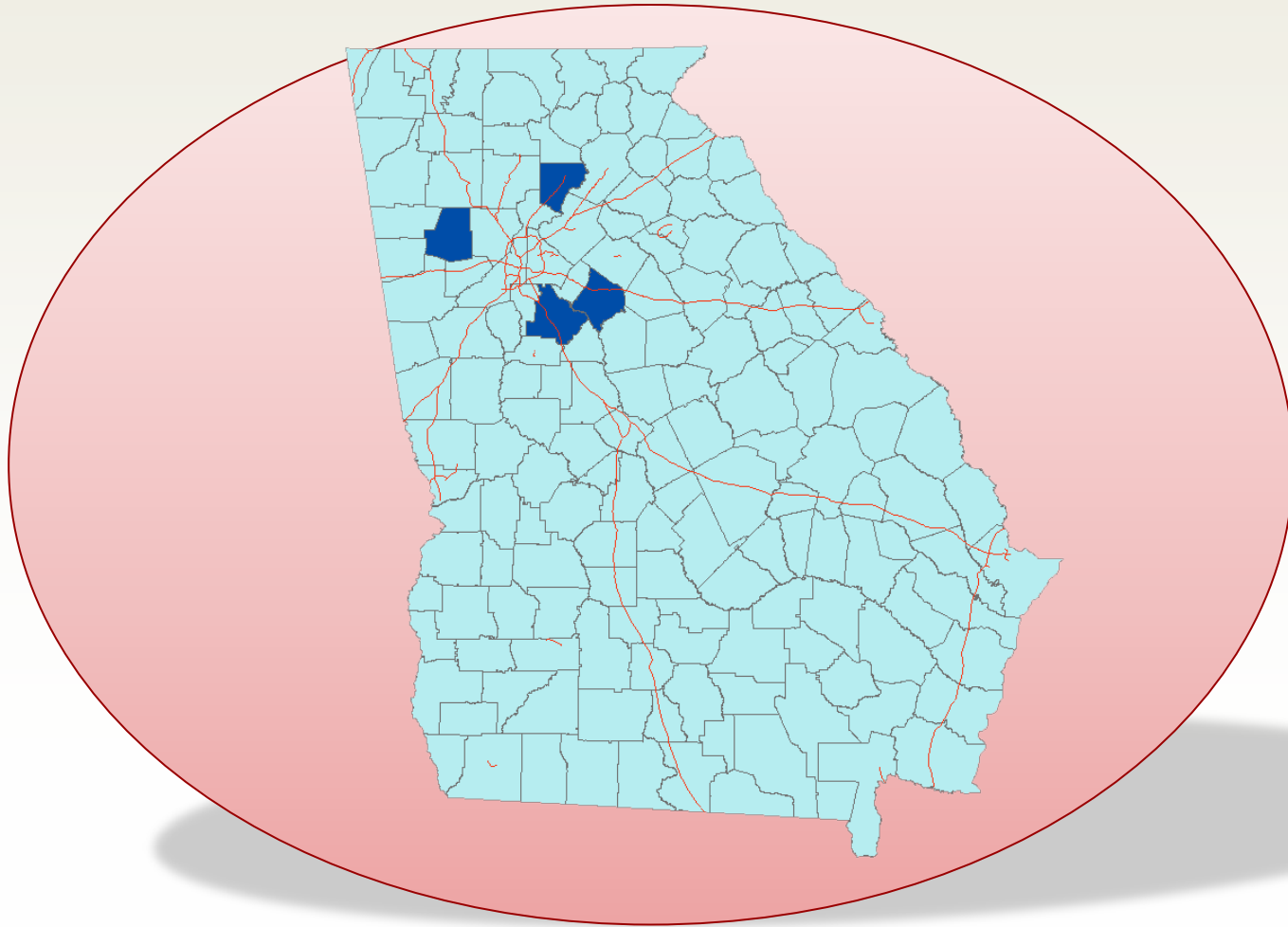


Fastest Growing Counties

- **Of the fastest growing counties in the U.S., Georgia has...**
 - 4 of the top 20,
 - 10 of the top 50, and
 - 18 of the top 100.
- **48% growth rate between 2000–2010**
 - From 1.6 million in 2000 to 2.4 million in 2010



Fastest Growing Counties: 4 of 20

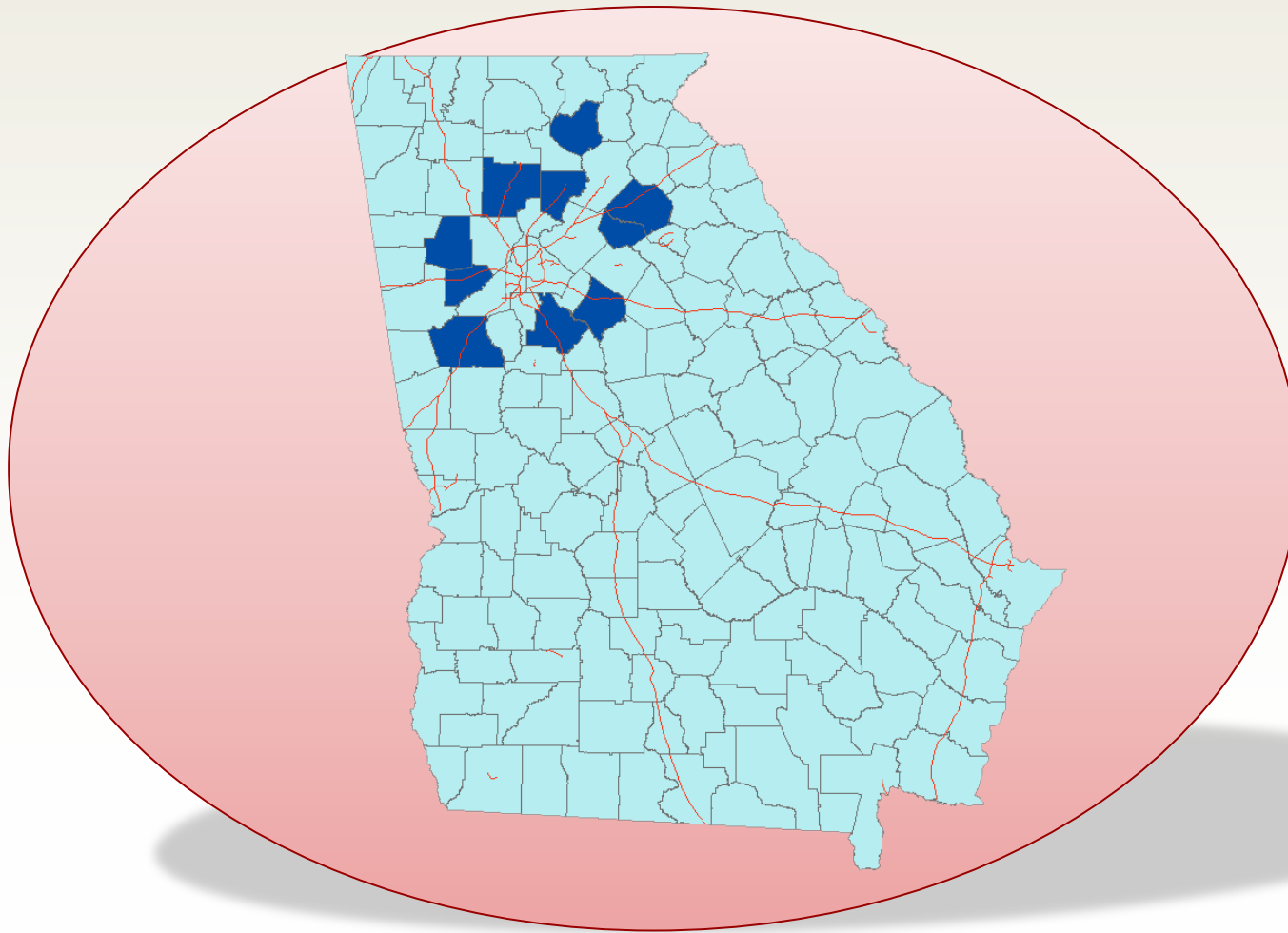


Carl Vinson **Institute of Government**

The University of Georgia

PROMOTING
EXCELLENCE *IN*
GOVERNMENT

Fastest Growing Counties: 10 of 50

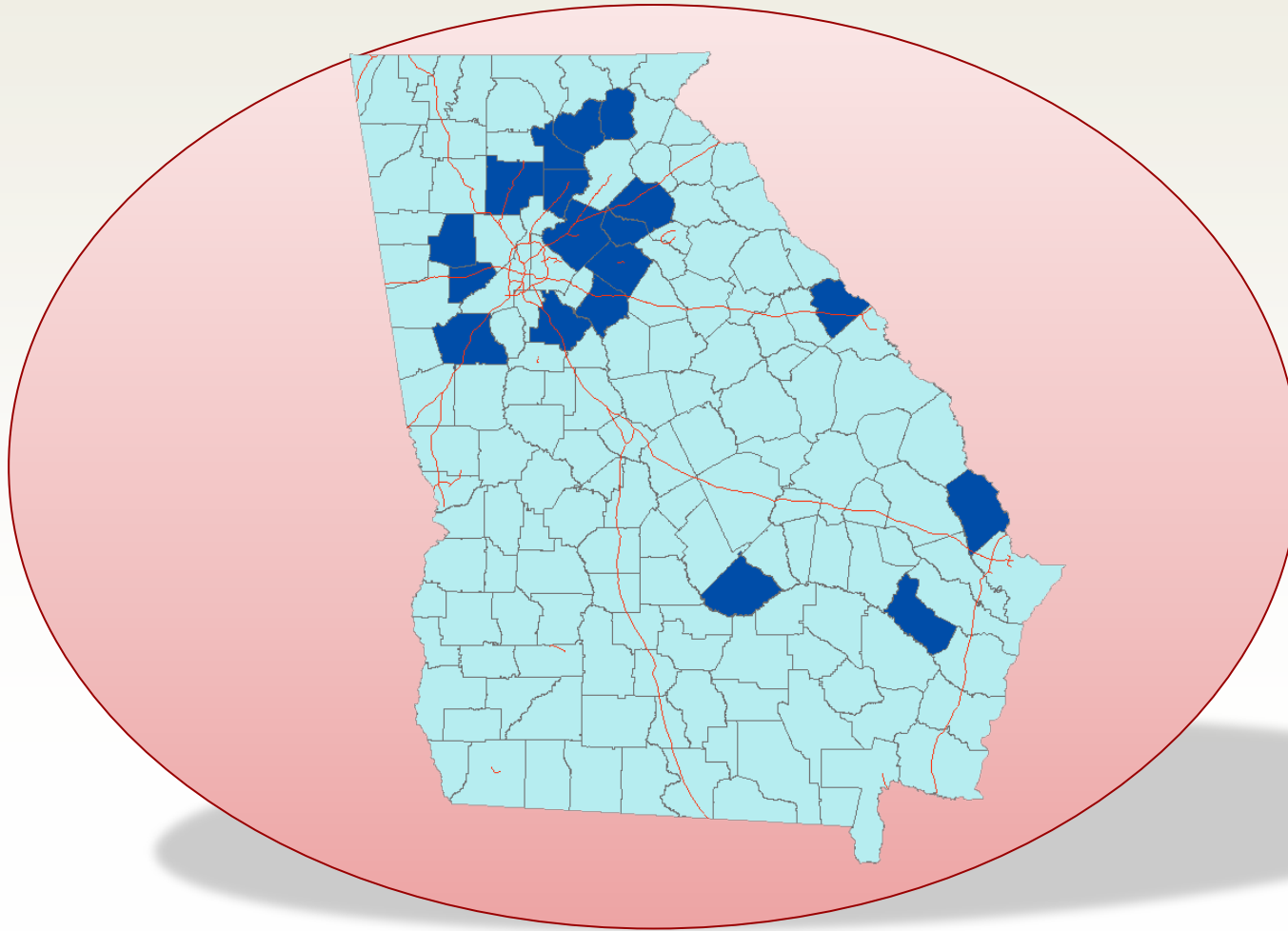


Carl Vinson **Institute of Government**

The University of Georgia

PROMOTING
EXCELLENCE *IN*
GOVERNMENT

Fastest Growing Counties: 18 of 100

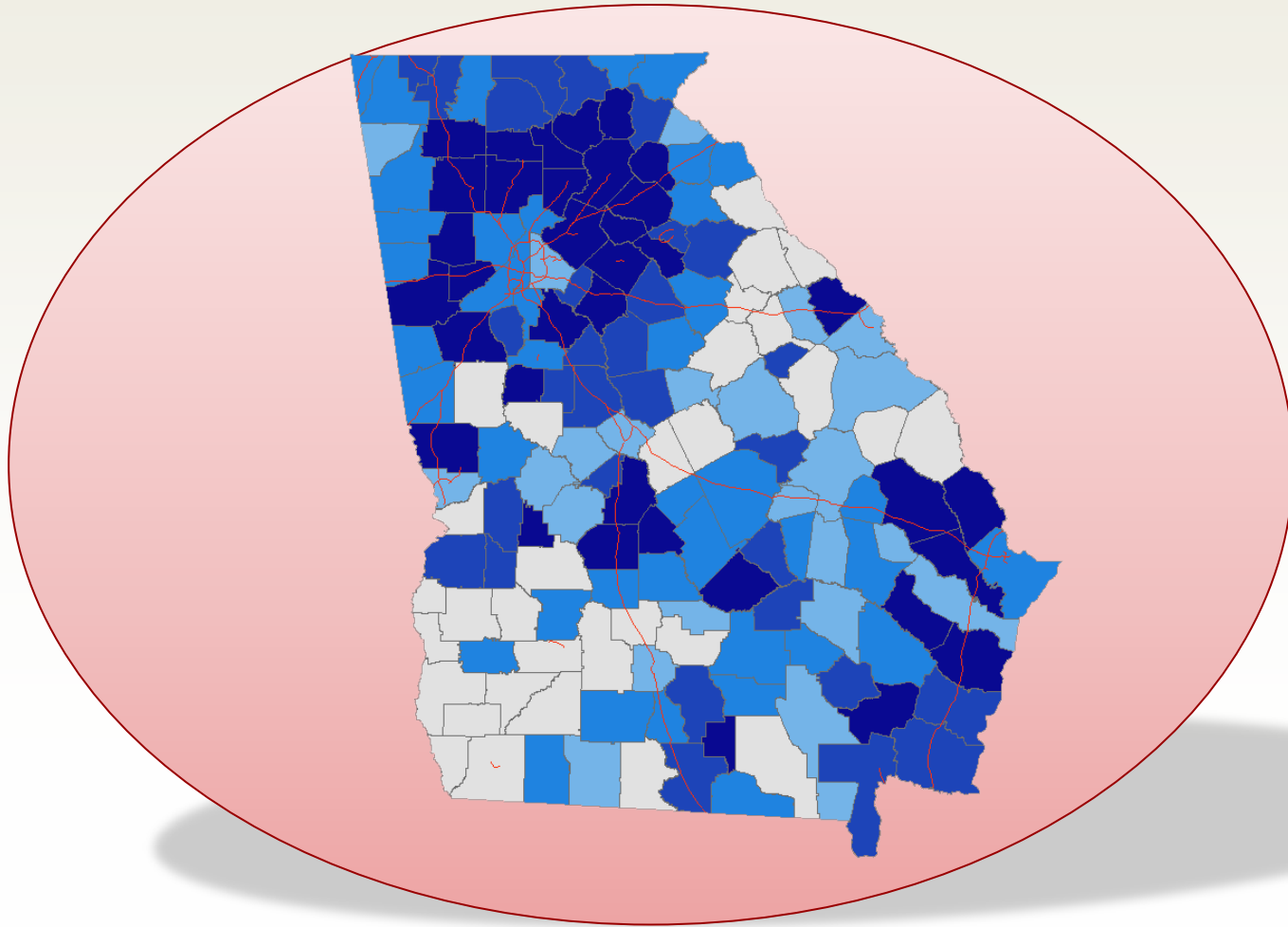


Carl Vinson **Institute of Government**

The University of Georgia

PROMOTING
EXCELLENCE *IN*
GOVERNMENT

Change in Population, 2000–2010

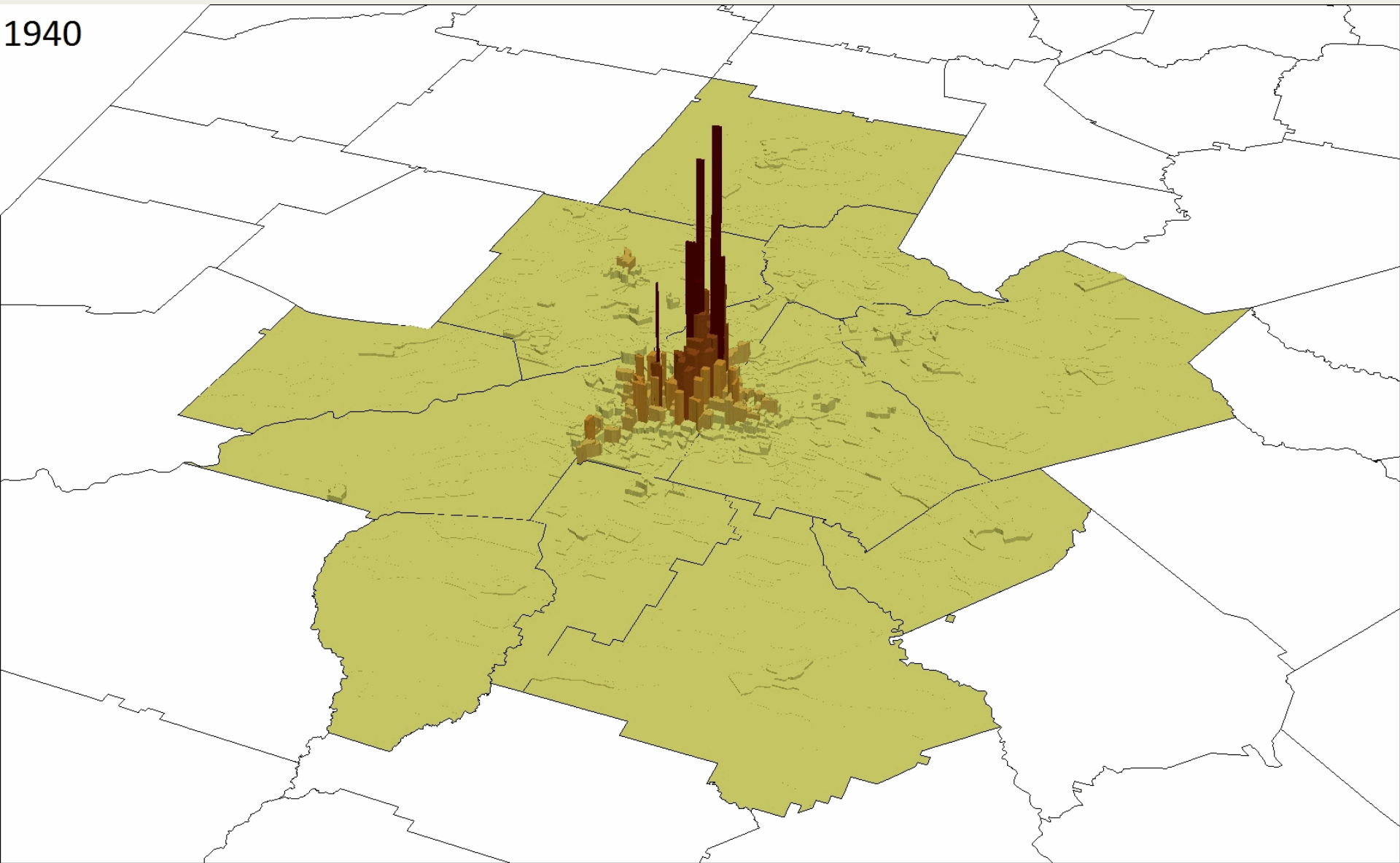


Carl Vinson **Institute of Government**

The University of Georgia

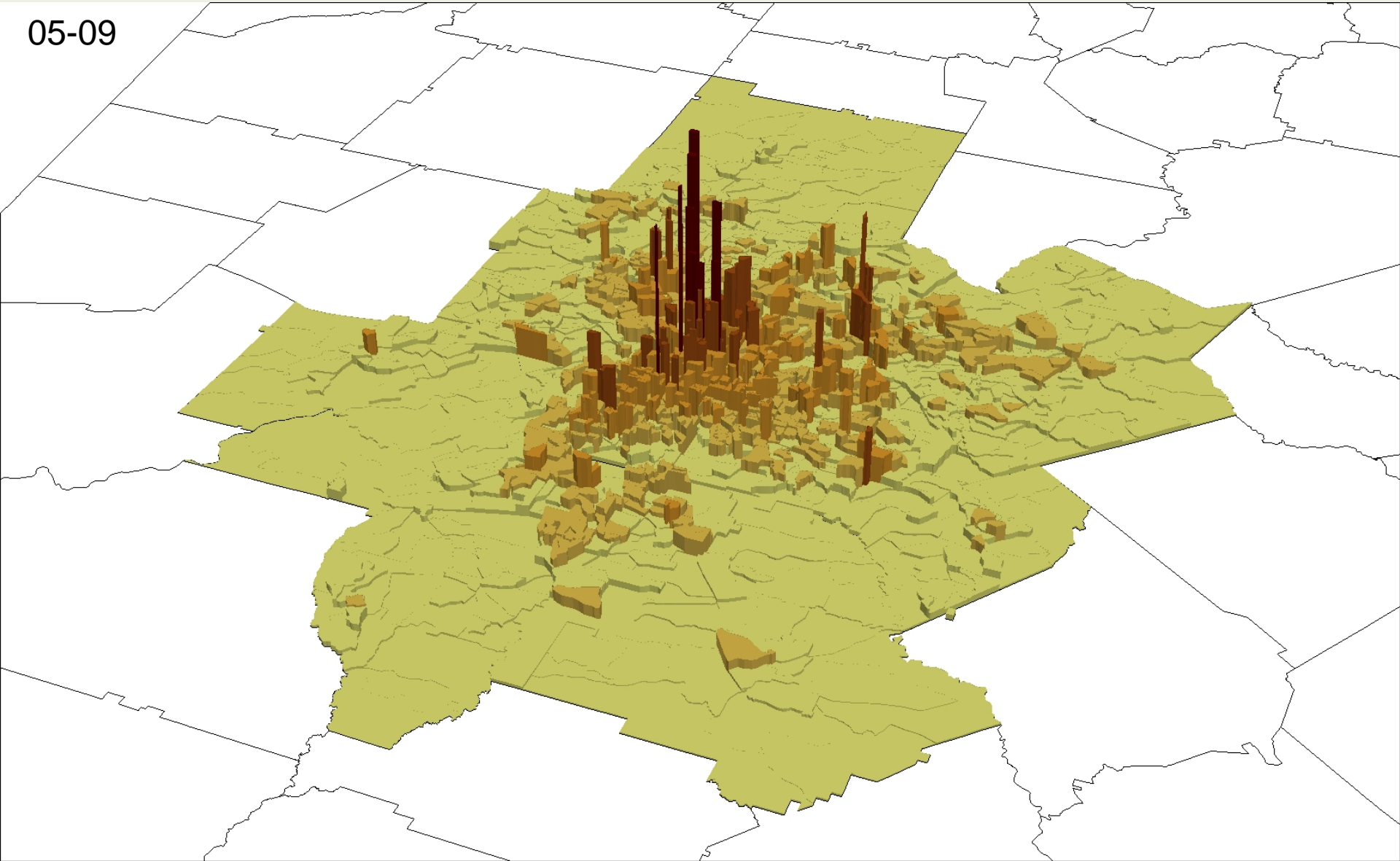
PROMOTING
EXCELLENCE *IN*
GOVERNMENT

Atlanta Housing Growth

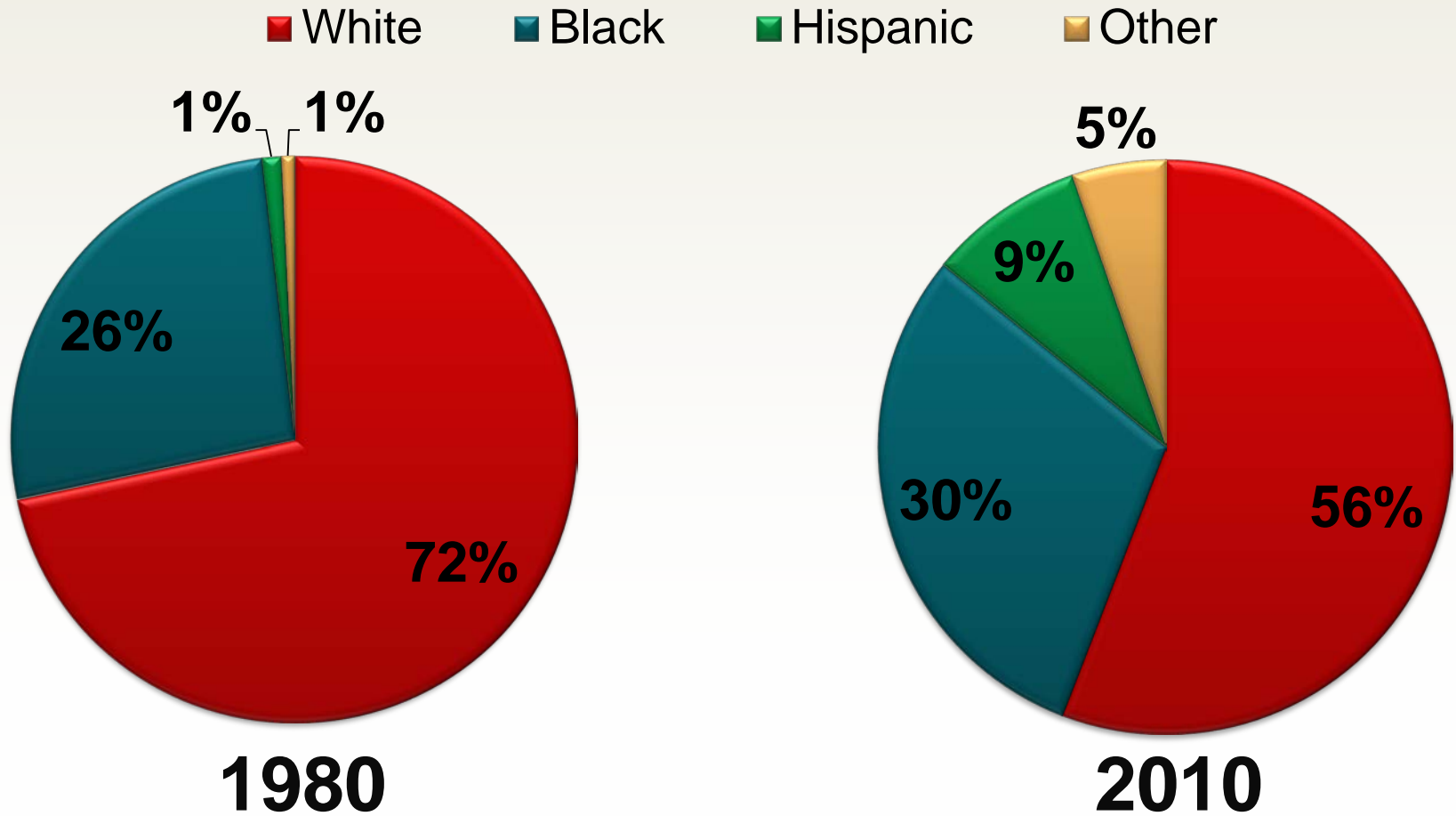


Atlanta Housing Growth

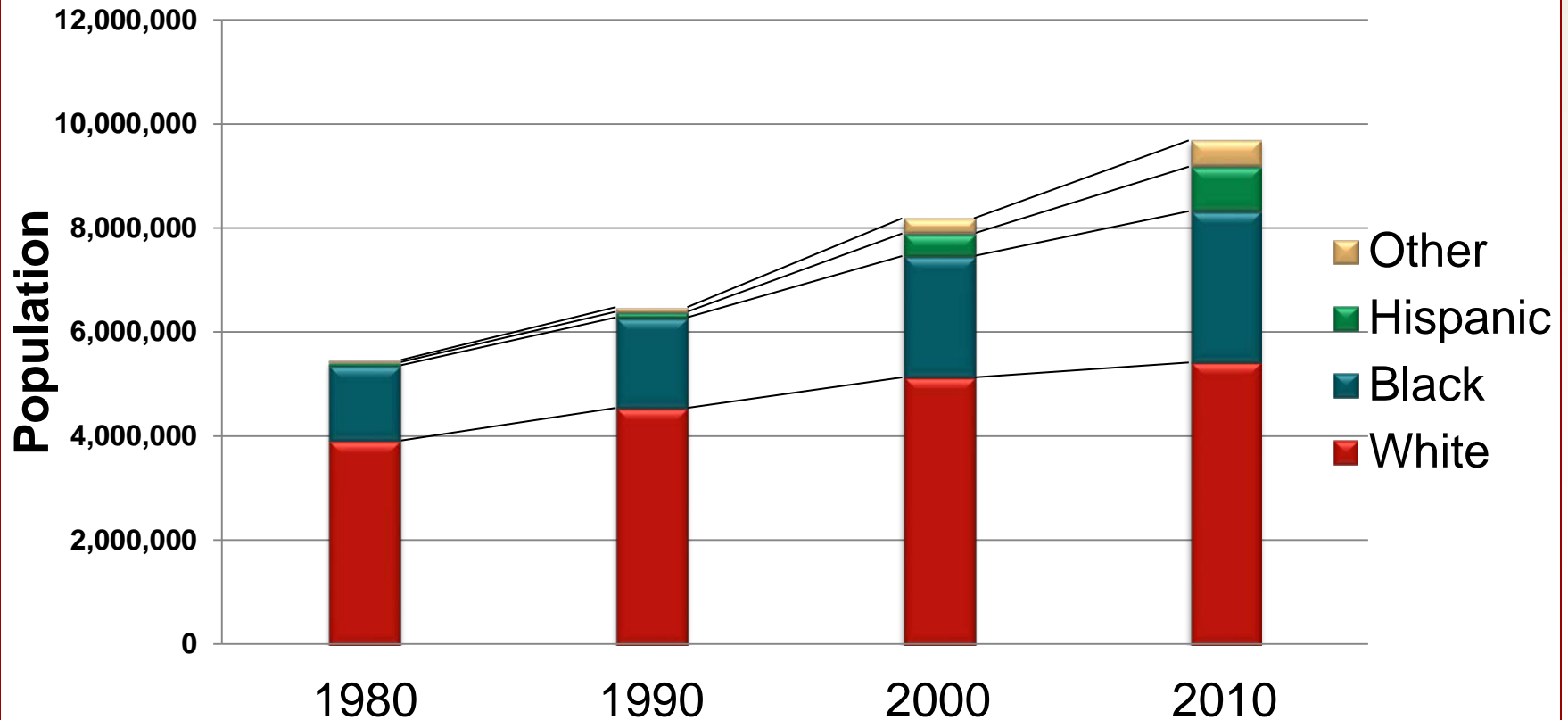
05-09



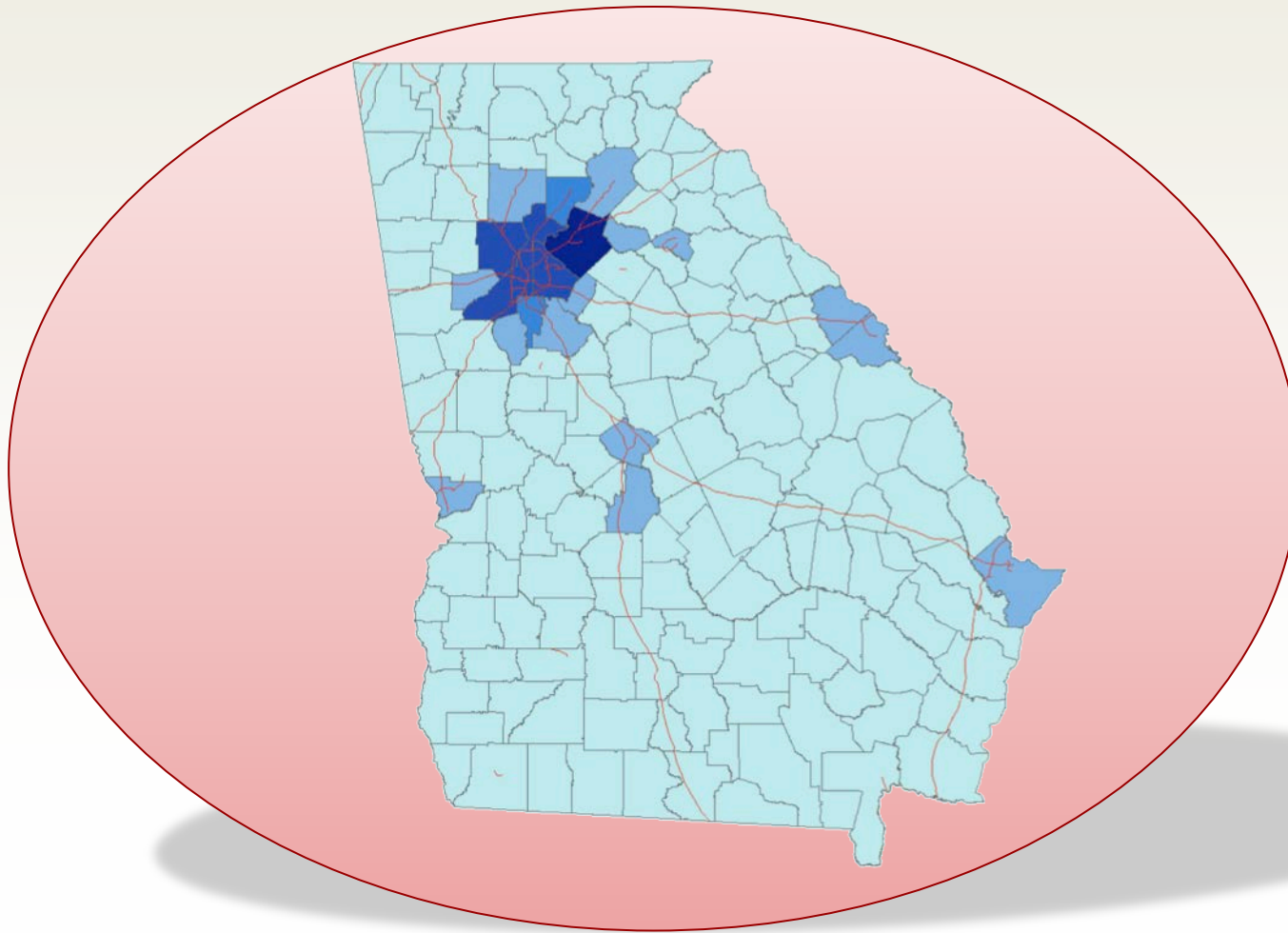
Georgia's Race Distribution, 2010



Race and Ethnic Population Change, 1980–2010



Percent of State Asian Population



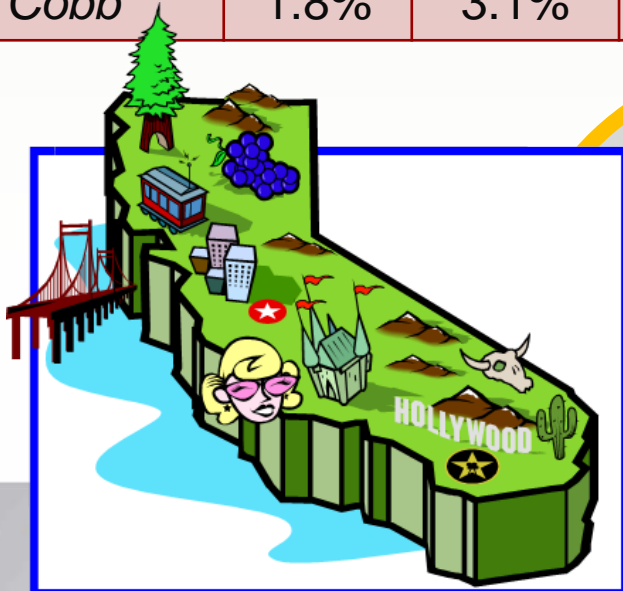
Carl Vinson **Institute of Government**

The University of Georgia

PROMOTING
EXCELLENCE *IN*
GOVERNMENT

Georgia Is the New California

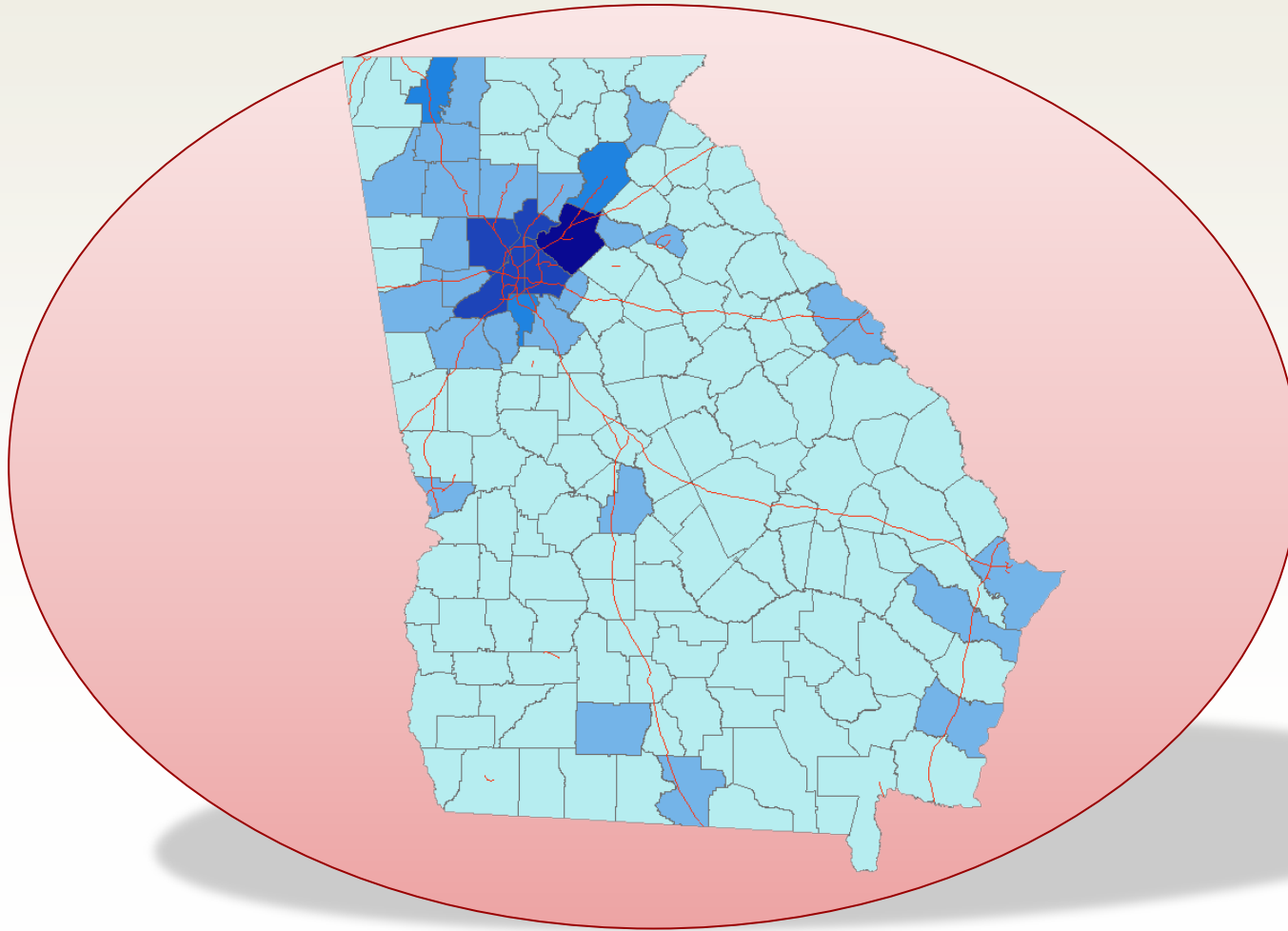
	Percent Asian			Percent Change
County	1990	2000	2010	1990–2010
Henry	0.6%	1.8%	3.0%	1,753%
Gwinnett	2.9%	7.2%	10.7%	739%
Fulton	1.3%	3.0%	5.6%	519%
Cobb	1.8%	3.1%	4.5%	291%



Gwinnett County has the largest New Immigrant Asian population

Henry County is one of the four fastest growing counties in the U.S.

Percent of State Hispanic Population

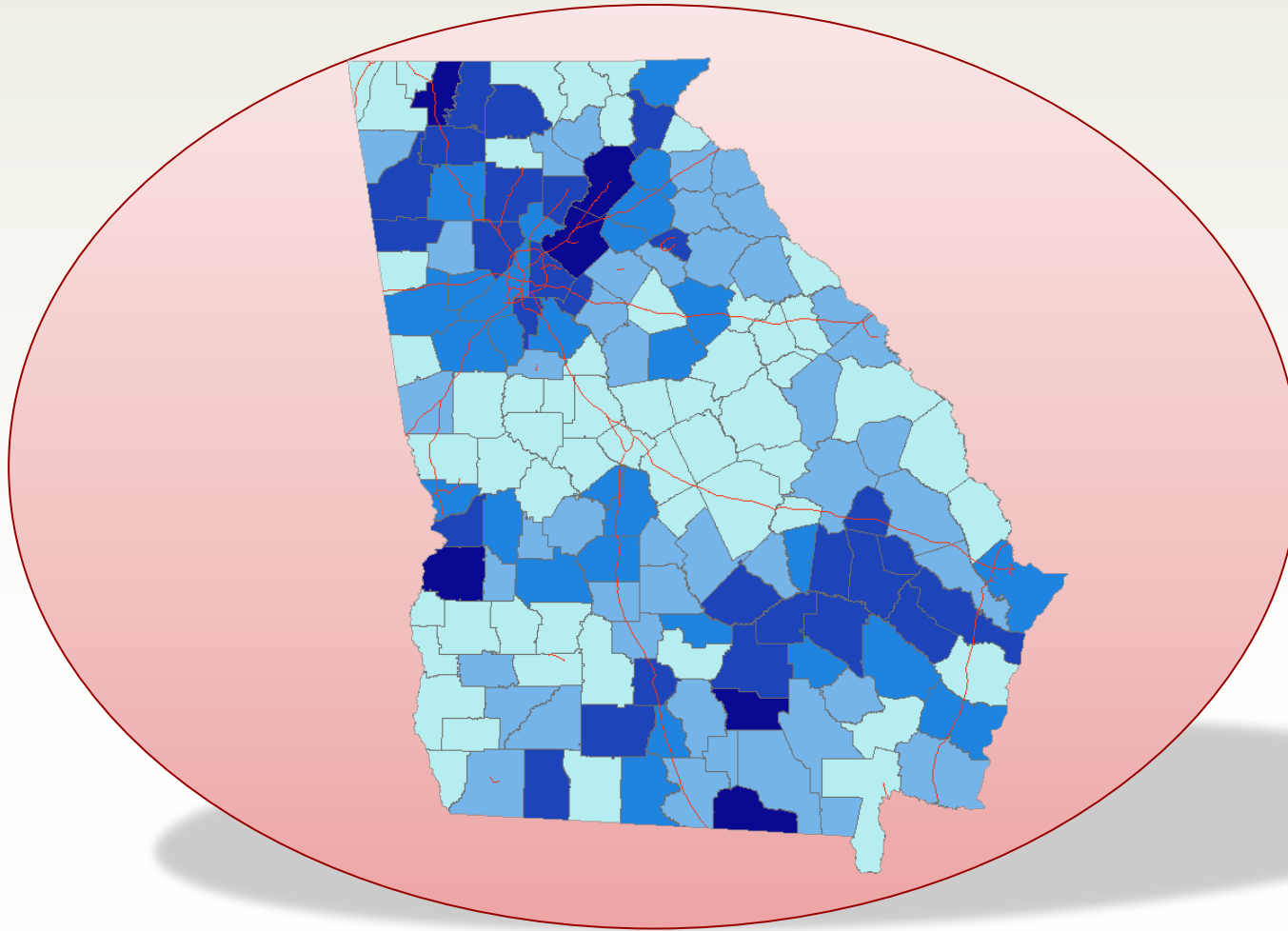


Carl Vinson **Institute of Government**

The University of Georgia

PROMOTING
EXCELLENCE *IN*
GOVERNMENT

Percent of Hispanic Population by County

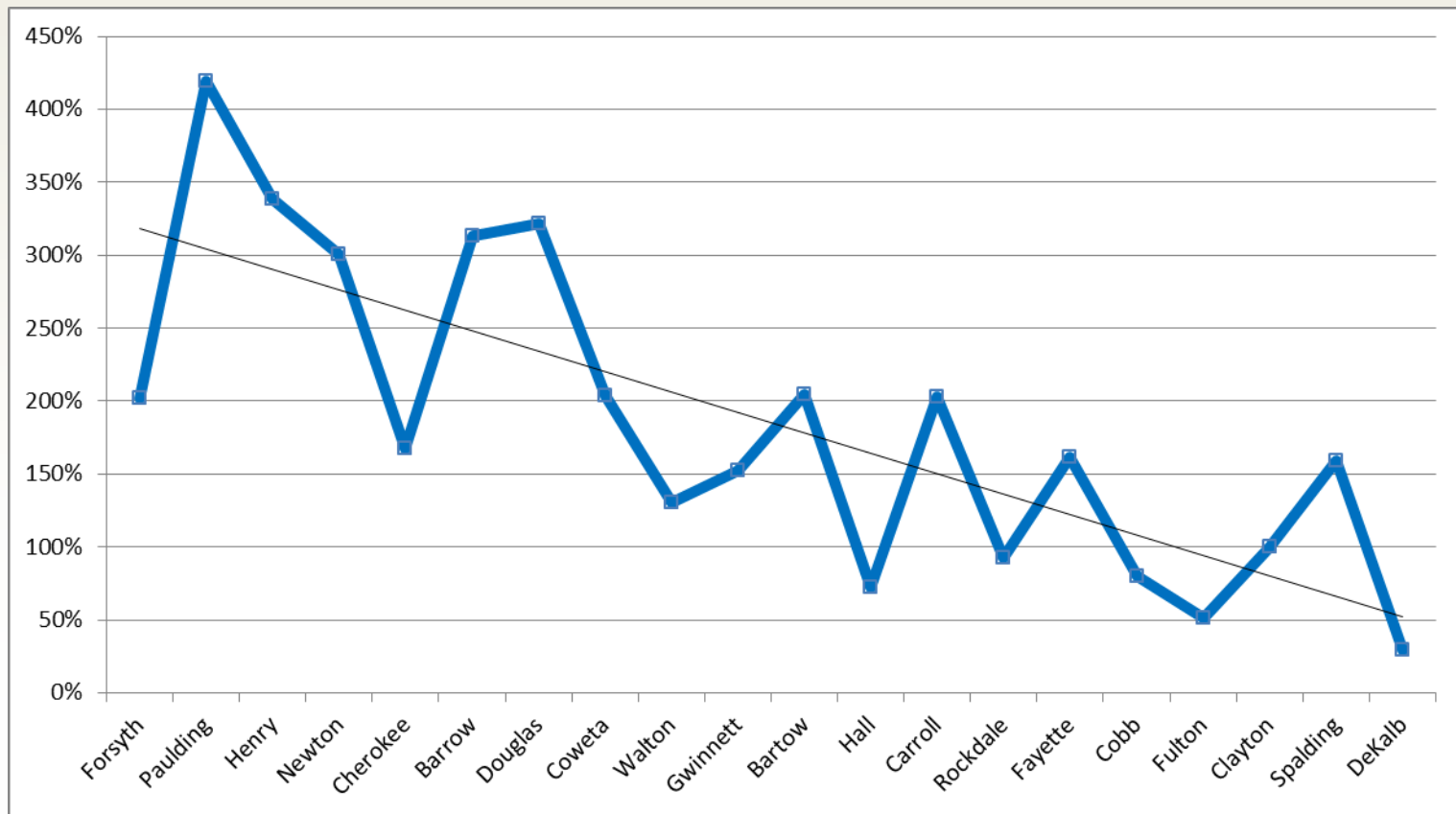


Carl Vinson **Institute of Government**

The University of Georgia

PROMOTING
EXCELLENCE *IN*
GOVERNMENT

Fast Growth = Fast Hispanic Growth 2000-2010

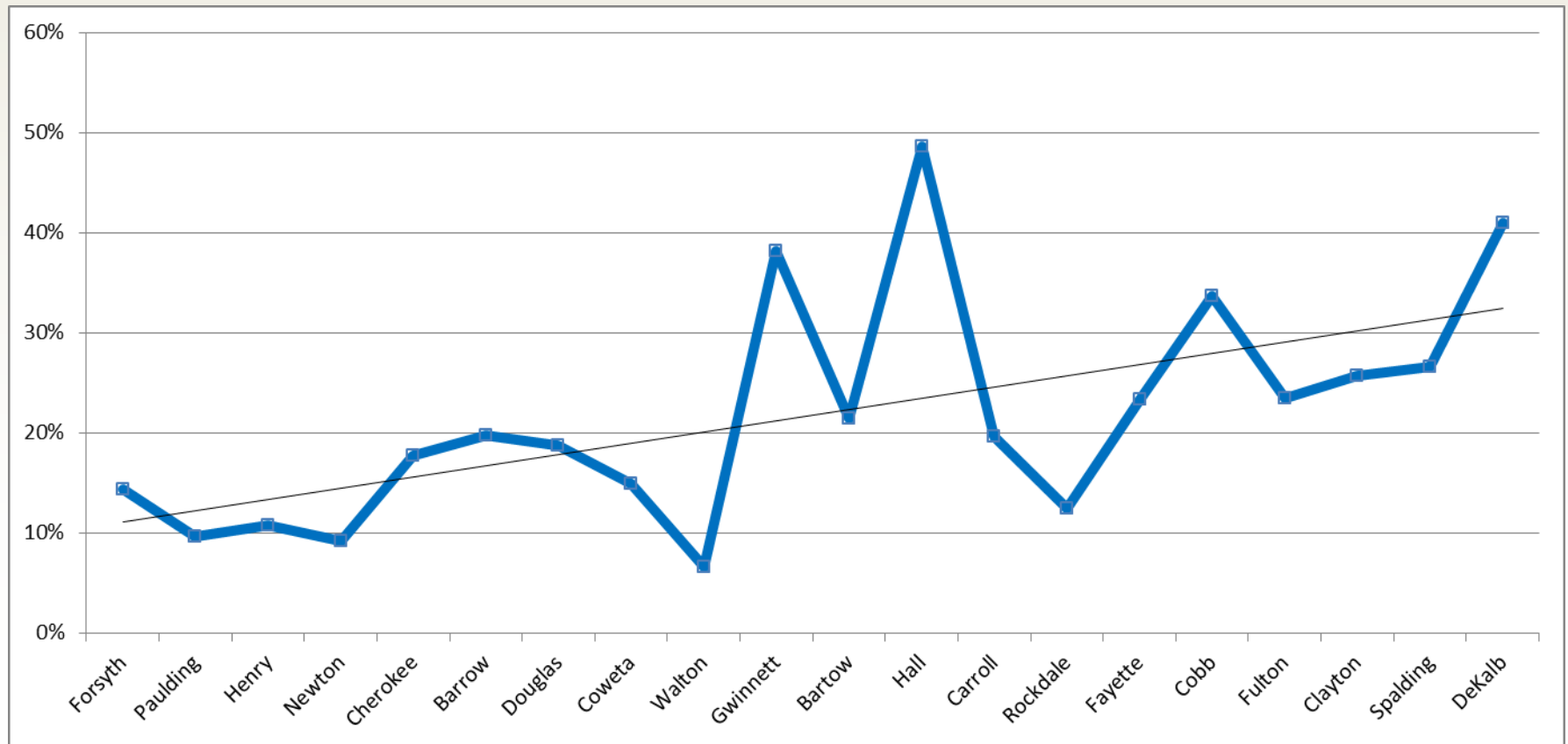


Carl Vinson **Institute of Government**

The University of Georgia

PROMOTING
EXCELLENCE IN
GOVERNMENT

Slow Growth = Larger Proportions due to Hispanic Growth



Carl Vinson **Institute of Government**

The University of Georgia

PROMOTING
EXCELLENCE IN
GOVERNMENT

Growth, 2000–2010

	Number Change	Percent Change	Annual Growth Rate	Doubling Time
White	285,259	5.6%	0.6%	116.67 years
Black	579,335	24.8%	2.5%	28 years
Other	218,144	74.9%	6.4%	10.94 years
Hispanic	418,462	96.1%	7.8%	8.97 years



Where Do Babies Come From?

Demographic Perspective



Number of Women of Childbearing Age

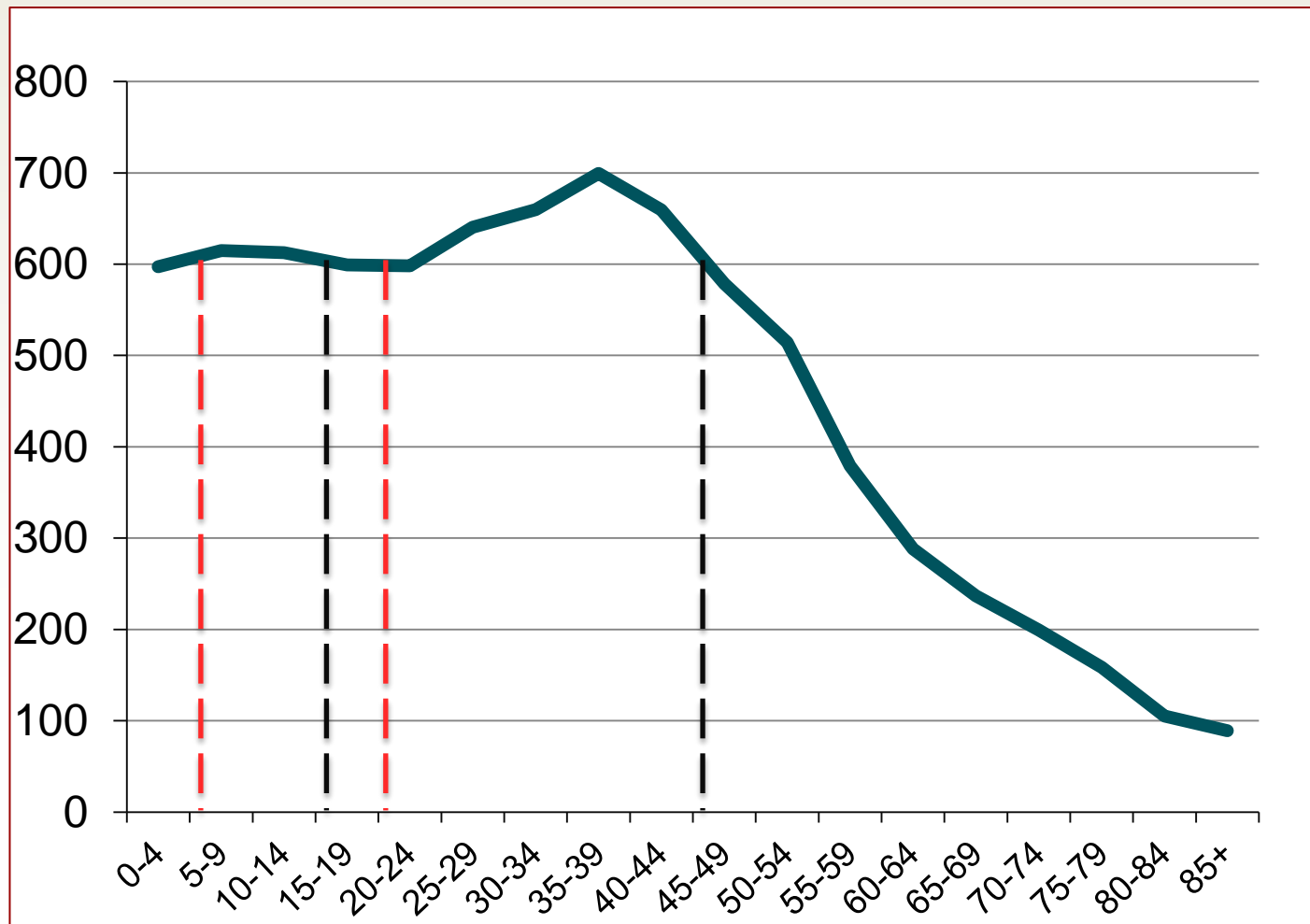


Carl Vinson **Institute of Government**

The University of Georgia

PROMOTING
EXCELLENCE IN
GOVERNMENT

Prime School Age (5–25 Years) Population in 2000



Carl Vinson **Institute of Government**

The University of Georgia

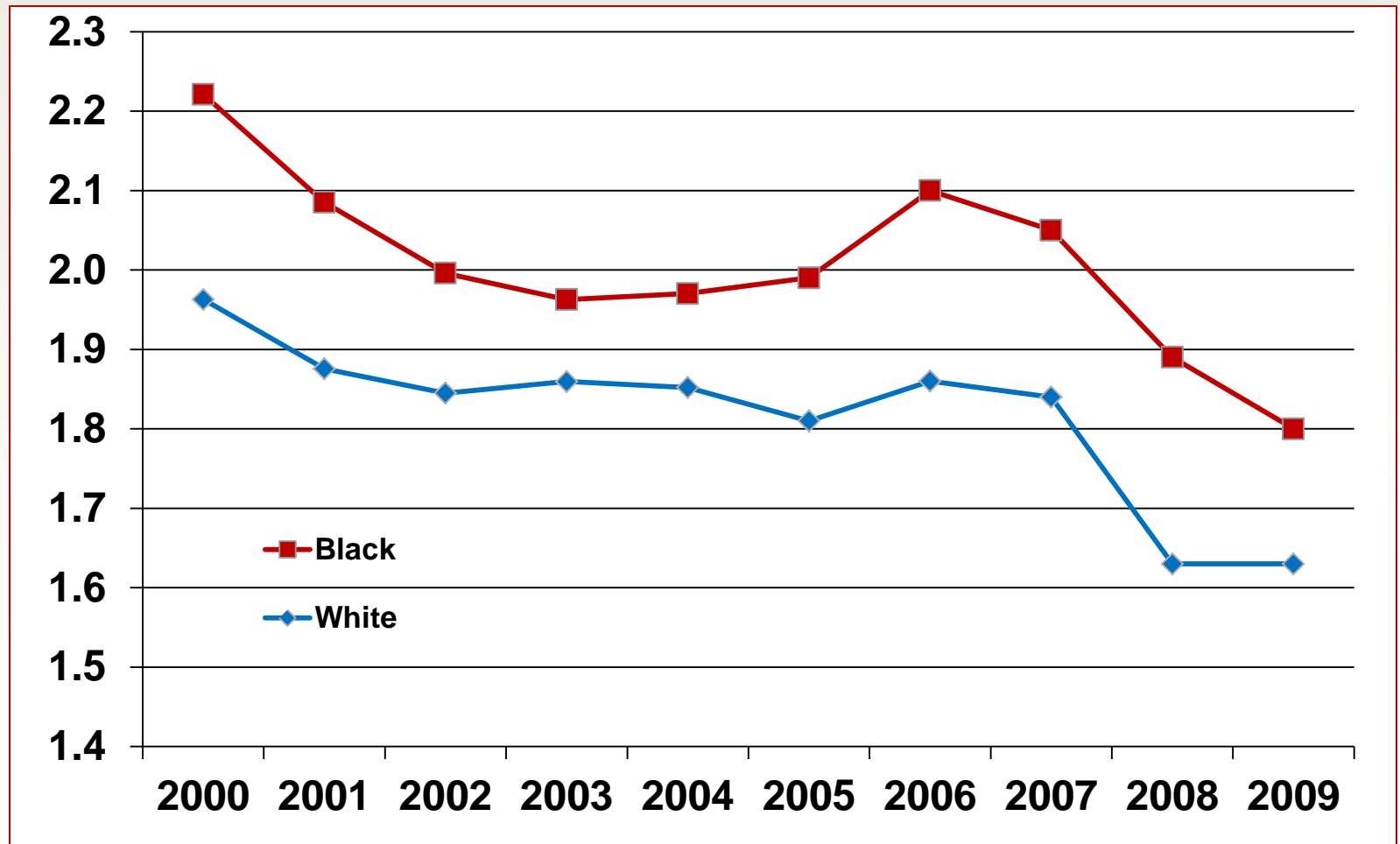
PROMOTING
EXCELLENCE IN
GOVERNMENT

Total Fertility Rate, 2000

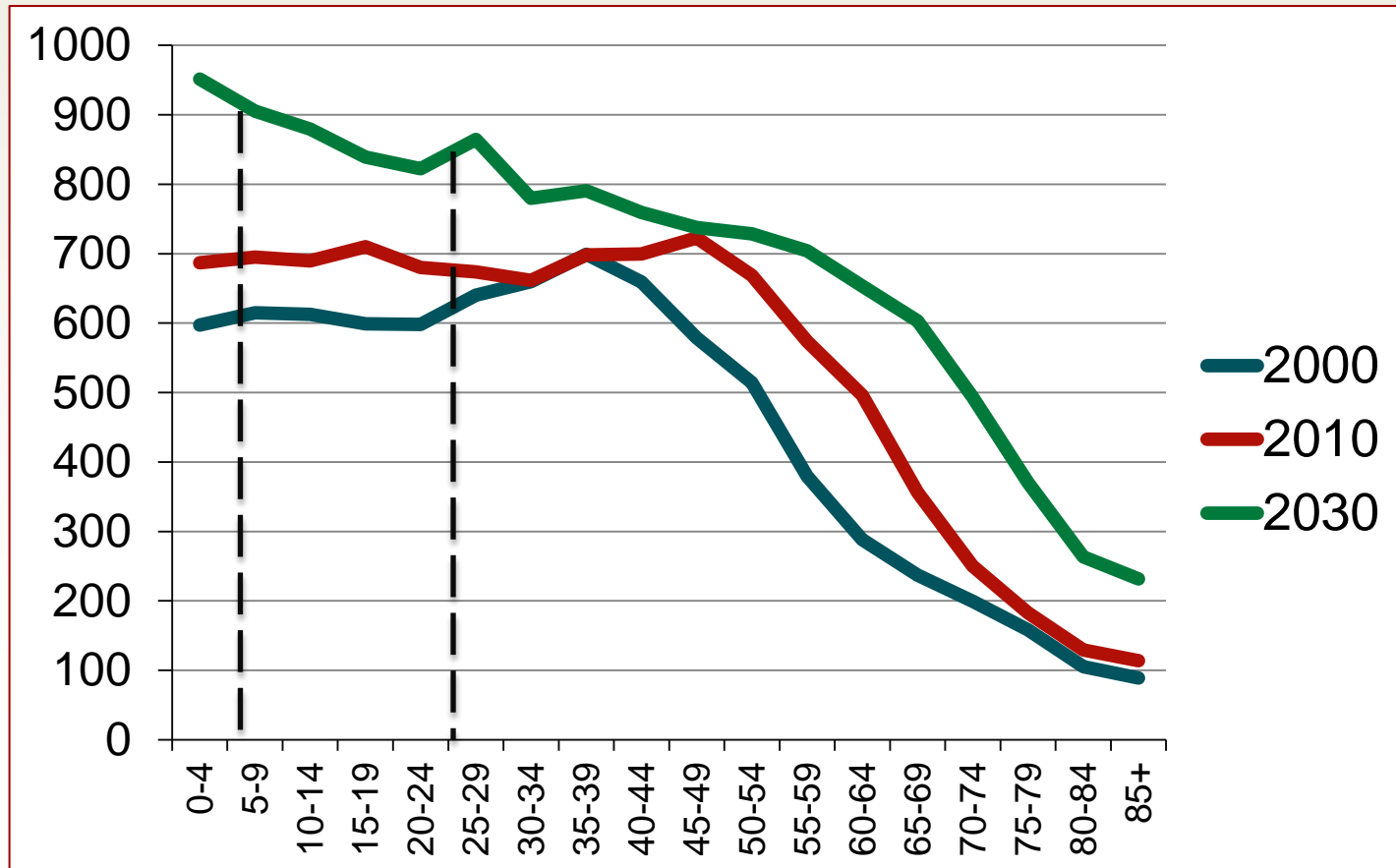
	Total Fertility Rate
Statewide	2.13
White	1.96
Black	2.22
Other	1.44
Hispanic	3.53



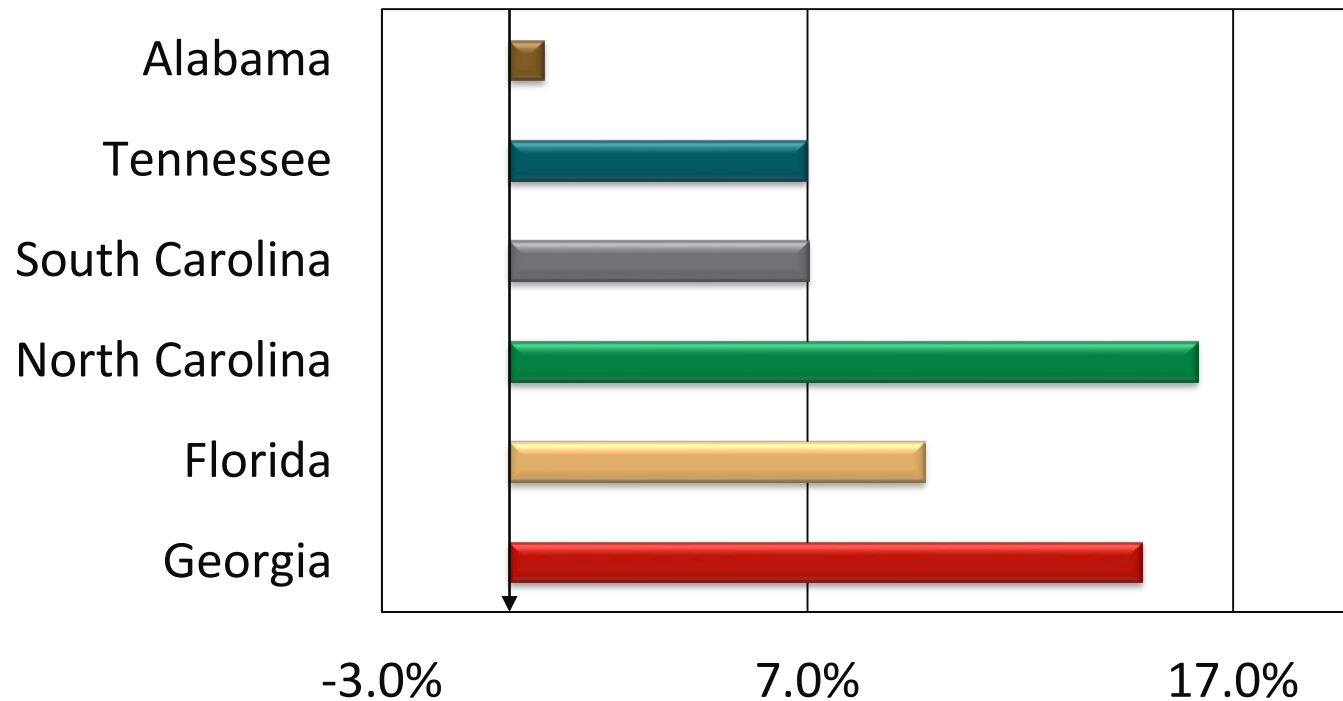
Total Fertility Rates 2000-2009



Age Distribution



Percent Change in Population Under 18, 2000–2010



In 2030, There Will Be...

*an additional 1.1 million persons under
age 18.*



Carl Vinson **Institute of Government**

The University of Georgia

PROMOTING
EXCELLENCE IN
GOVERNMENT

In 2030, There Will Be...

*an additional 1.3 million persons under
age 24.*



Carl Vinson **Institute of Government**

The University of Georgia

PROMOTING
EXCELLENCE IN
GOVERNMENT

In 2030, There Will Be...

One out of five of those under age 24 will be Hispanic.

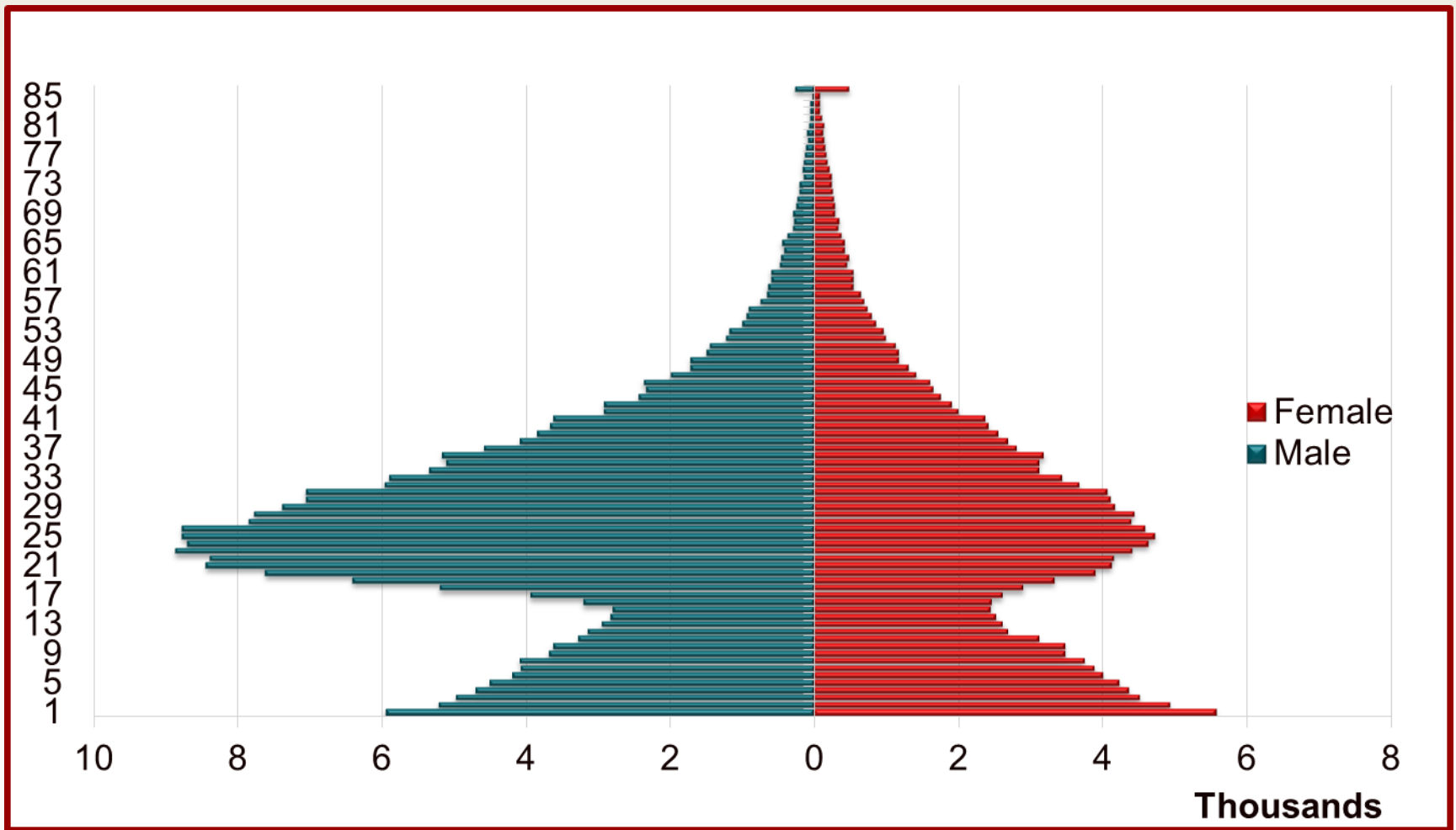


Carl Vinson **Institute of Government**

The University of Georgia

PROMOTING
EXCELLENCE IN
GOVERNMENT

Hispanic Population, 2000



Carl Vinson Institute of Government

The University of Georgia

PROMOTING
EXCELLENCE IN
GOVERNMENT

Educational Attainment

- National graduation rate is 69%.
- 64,100 students did not graduate high school in 2009.



State-reported for NCLB: 72%

U.S. Dept. of Education: 62%

Education Week: 56%

16% gap between state and independent sources*



Carl Vinson **Institute of Government**

The University of Georgia

PROMOTING
EXCELLENCE IN
GOVERNMENT

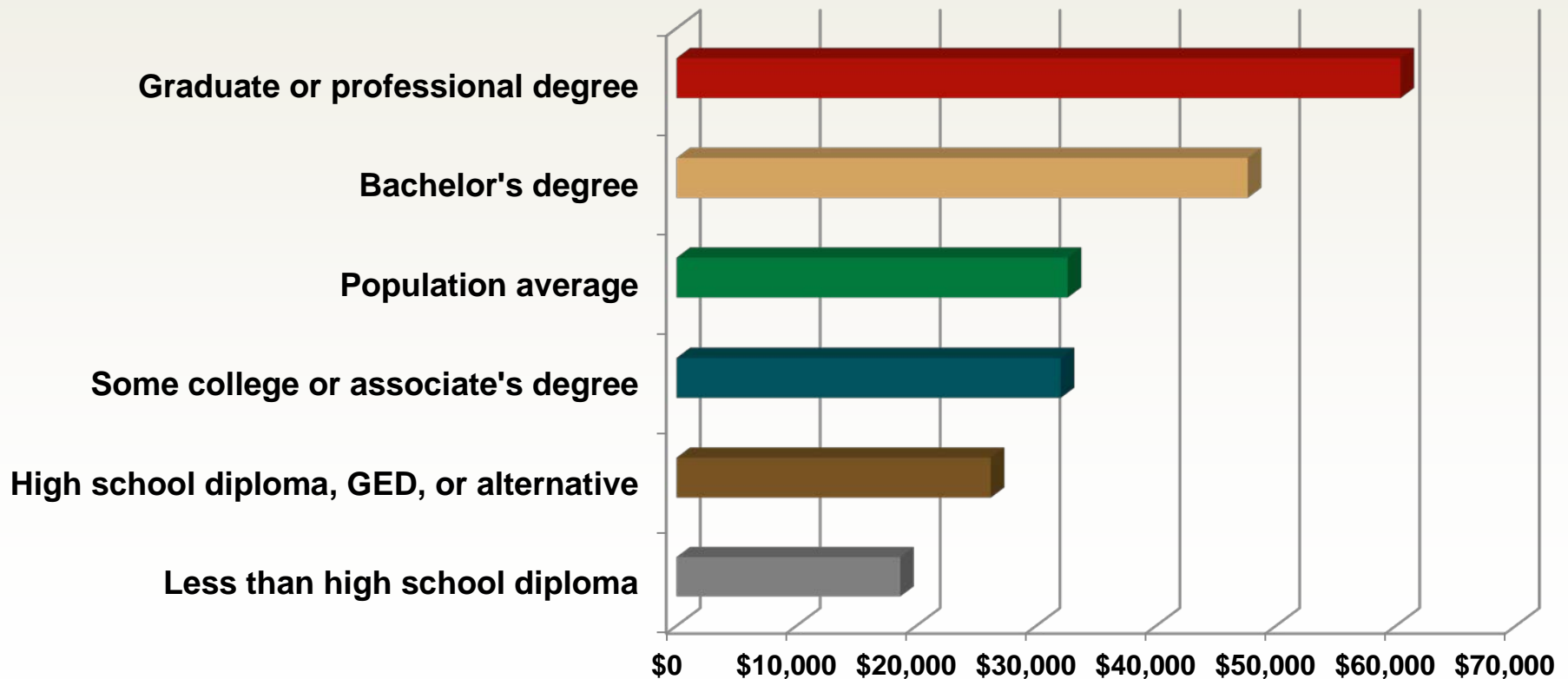
Educational Attainment

**Below poverty level, population aged 25 and older,
2007–2009**

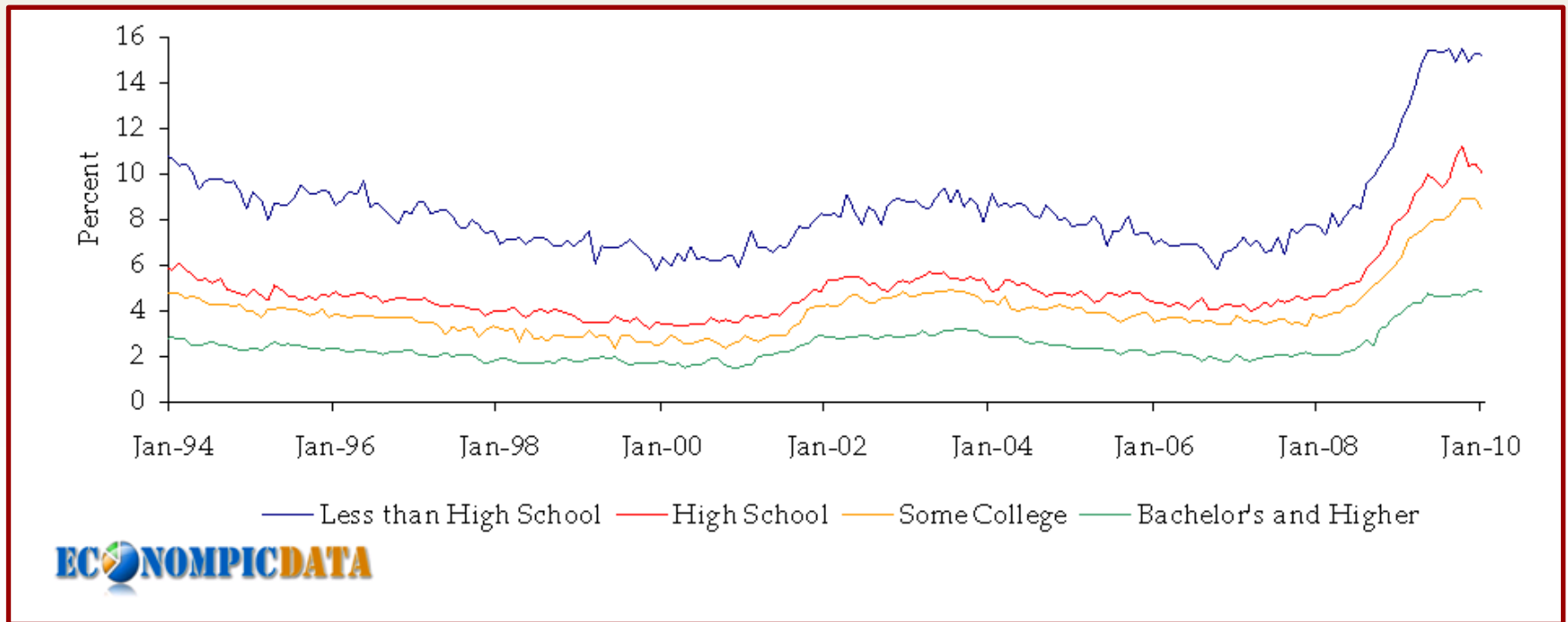
	% below poverty	% in educational group
Less than high school diploma	39%	28%
High school diploma, GED, or alternative	34%	14%
Some college or associate's degree	19%	8%
Bachelor's degree	6%	4%
Graduate or professional degree	2%	3%



Median Income by Educational Attainment



Unemployment by Education Attainment

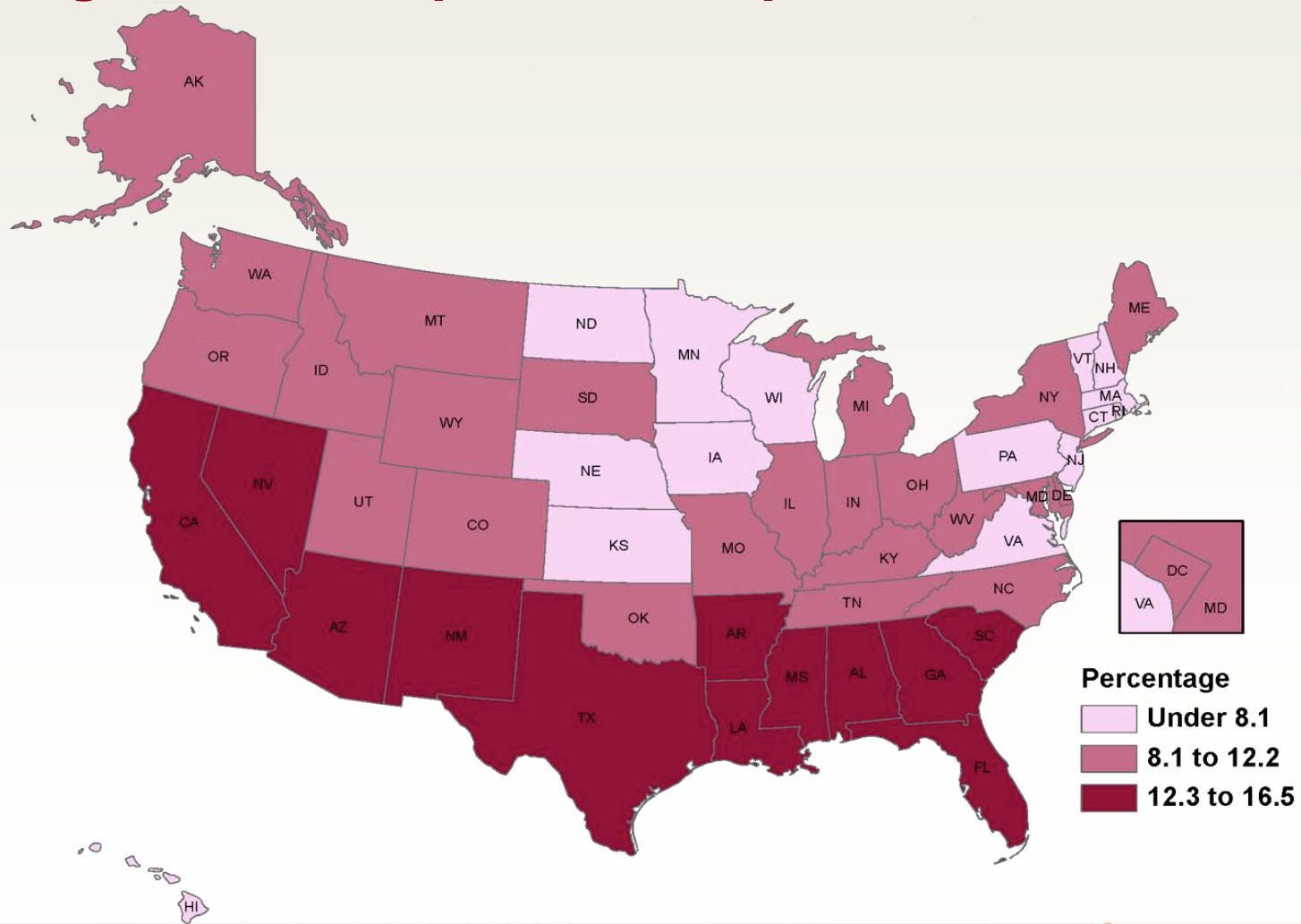


Carl Vinson **Institute of Government**

The University of Georgia

PROMOTING
EXCELLENCE IN
GOVERNMENT

Percent Aged 18–24 Not Enrolled and Not Having a High School Diploma or Equivalent, 2006–2008

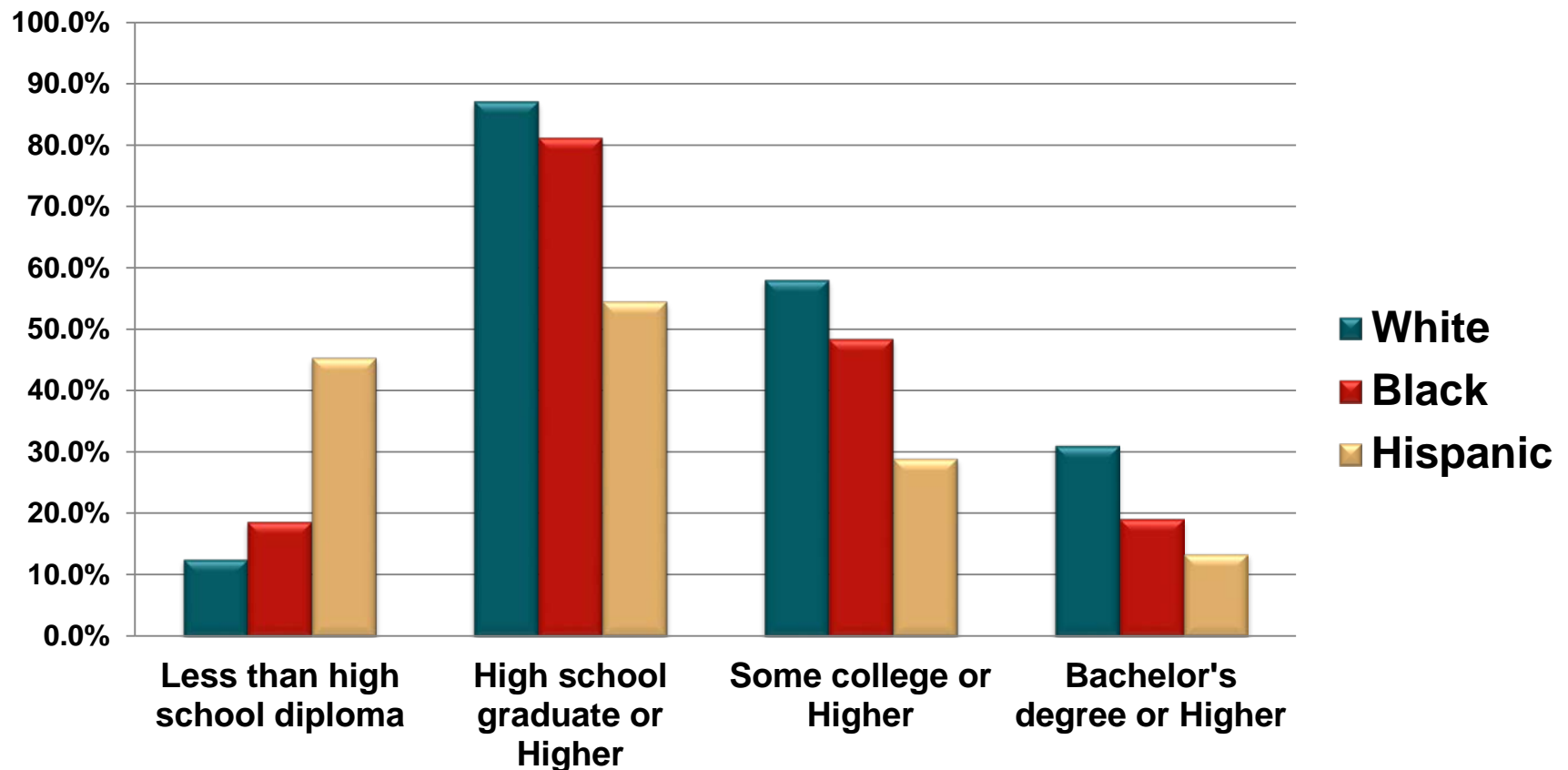


Carl Vinson **Institute of Government**

The University of Georgia

PROMOTING
EXCELLENCE IN
GOVERNMENT

Educational Attainment, Population Aged 25 and Older, 2007–2009



Educational Attainment

Native vs. Elsewhere Born population aged 18 and older, 2005–2009

	TOTAL	GEORGIA	ELSEWHERE
TOTAL	100%	49%	51%
Less Than HS	18%	60%	40%
HS to some College	58%	53%	47%
Bachelor's degree +	24%	32%	68%



Educational Attainment

Native vs. Elsewhere Born population aged 18 and older, 2005–2009

	TOTAL	GEORGIA	ELSEWHERE
White	100%	51%	49%
Less Than HS	14%	69%	31%
HS to some College	58%	55%	45%
Bachelor's degree +	28%	34%	65%



Educational Attainment

Native vs. Elsewhere Born population aged 18 and older, 2005–2009

	TOTAL	GEORGIA	ELSEWHERE
Black	100%	60%	40%
Less Than HS	20%	79%	21%
HS to some College	63%	60%	40%
Bachelor's degree +	16%	37%	63%



Prisons



**Georgia has the 5th largest
prison population in the U.S.**

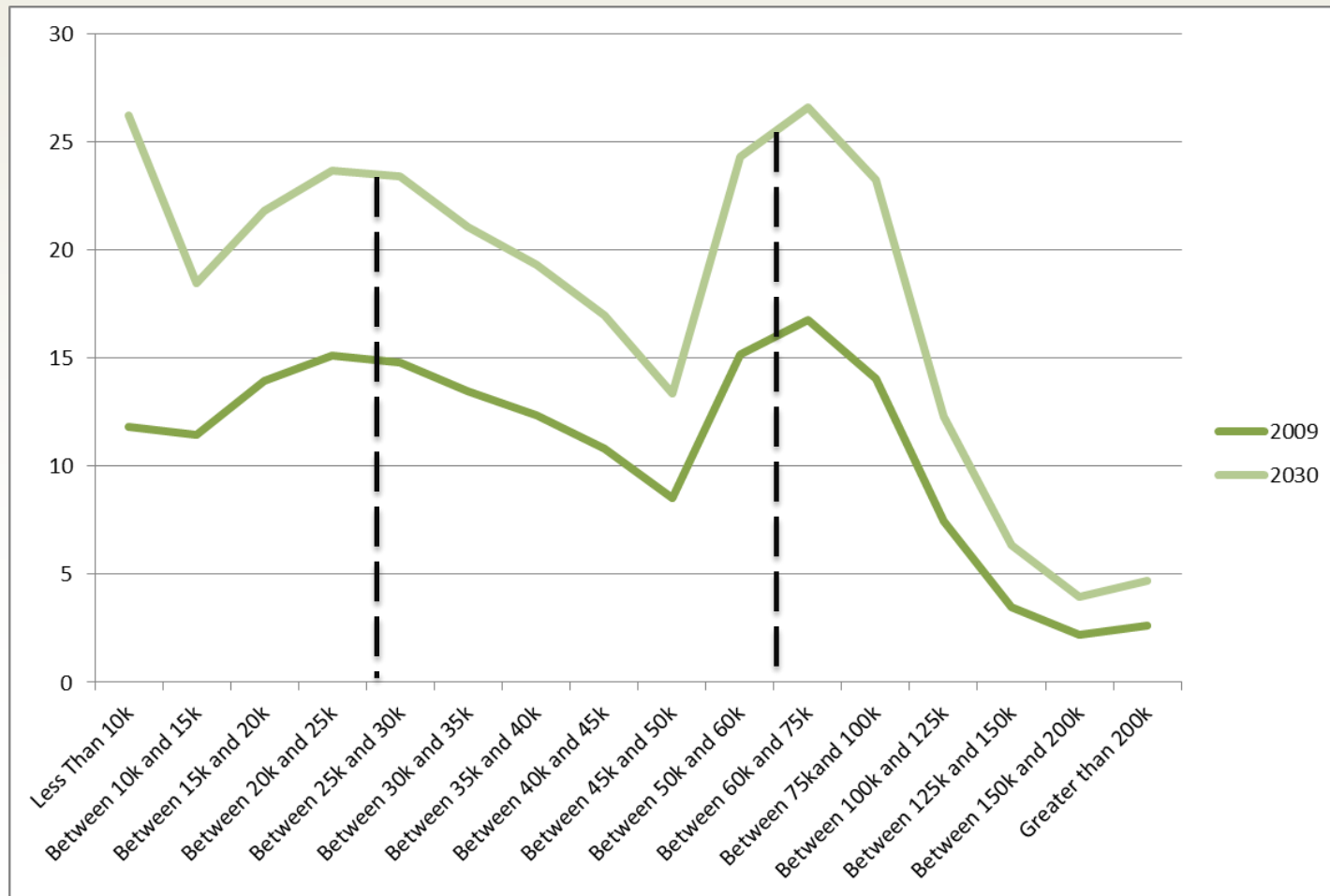


Carl Vinson Institute of Government

The University of Georgia

PROMOTING
EXCELLENCE IN
GOVERNMENT

Hispanic Income Distribution 2009 - 2030



Carl Vinson **Institute of Government**

The University of Georgia

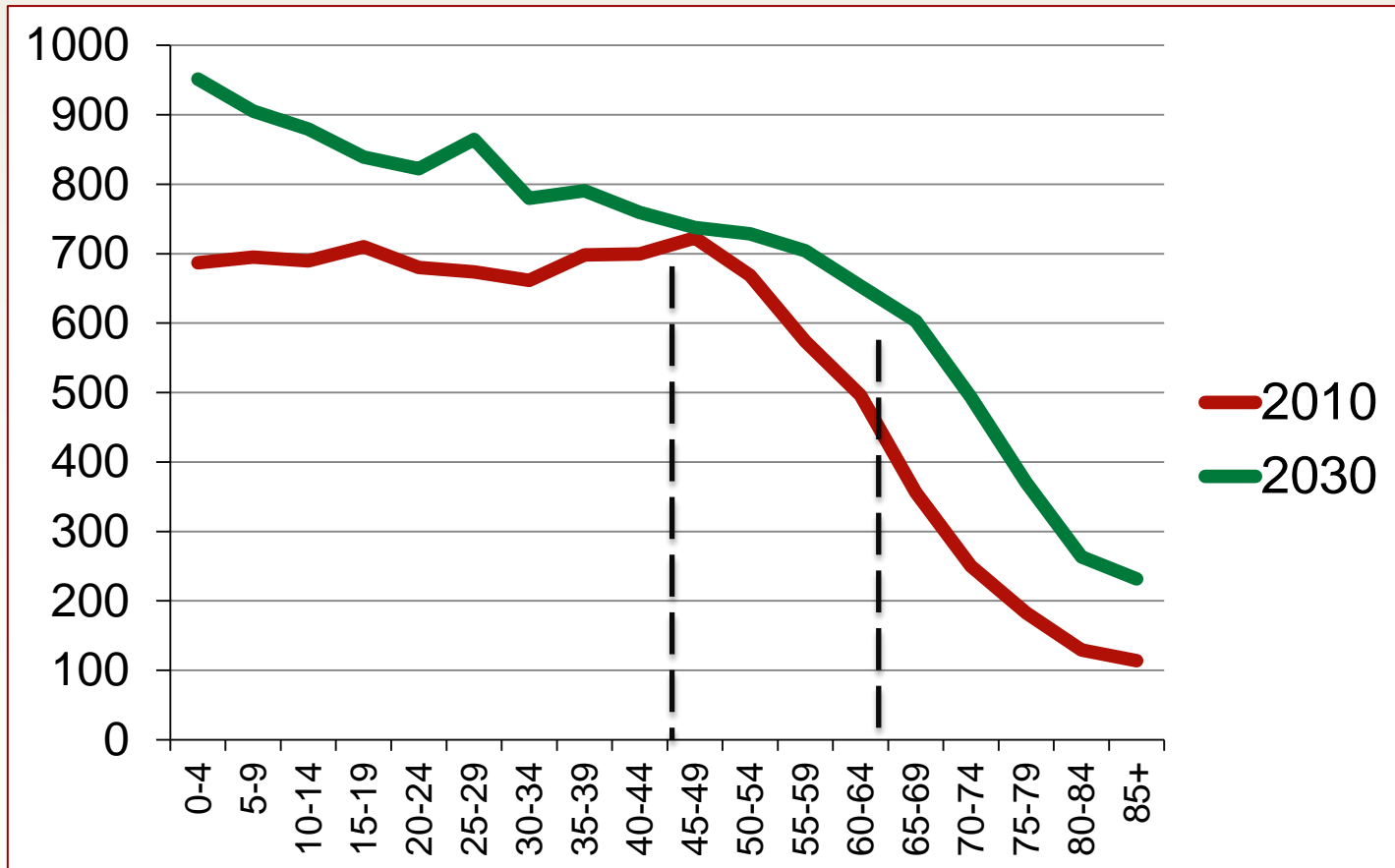
PROMOTING
EXCELLENCE IN
GOVERNMENT

Hispanic Income Growth 2009 - 2030

	% of Total Growth
Less Than 30k	44%
30k to 60k	35%
Greater Than 60k	22%



Age Distribution



Carl Vinson Institute of Government

The University of Georgia

PROMOTING
EXCELLENCE IN
GOVERNMENT

Population Change 1990-2010

	% Increase 1990-2010
Under 25	51%
25 - 44	25%
45 - 64	111%
65 - 80	53
80+	76



Mock Population Projection

	1990
5 - 24	2.0
25 - 44	2.2
45 - 64	1.2
65 - 80	0.6



Mock Population Projection

	1990	2010
5 - 24	2.0	2.7
25 - 44	2.2	2.7
45 - 64	1.2	2.4
65 - 80	0.6	0.9

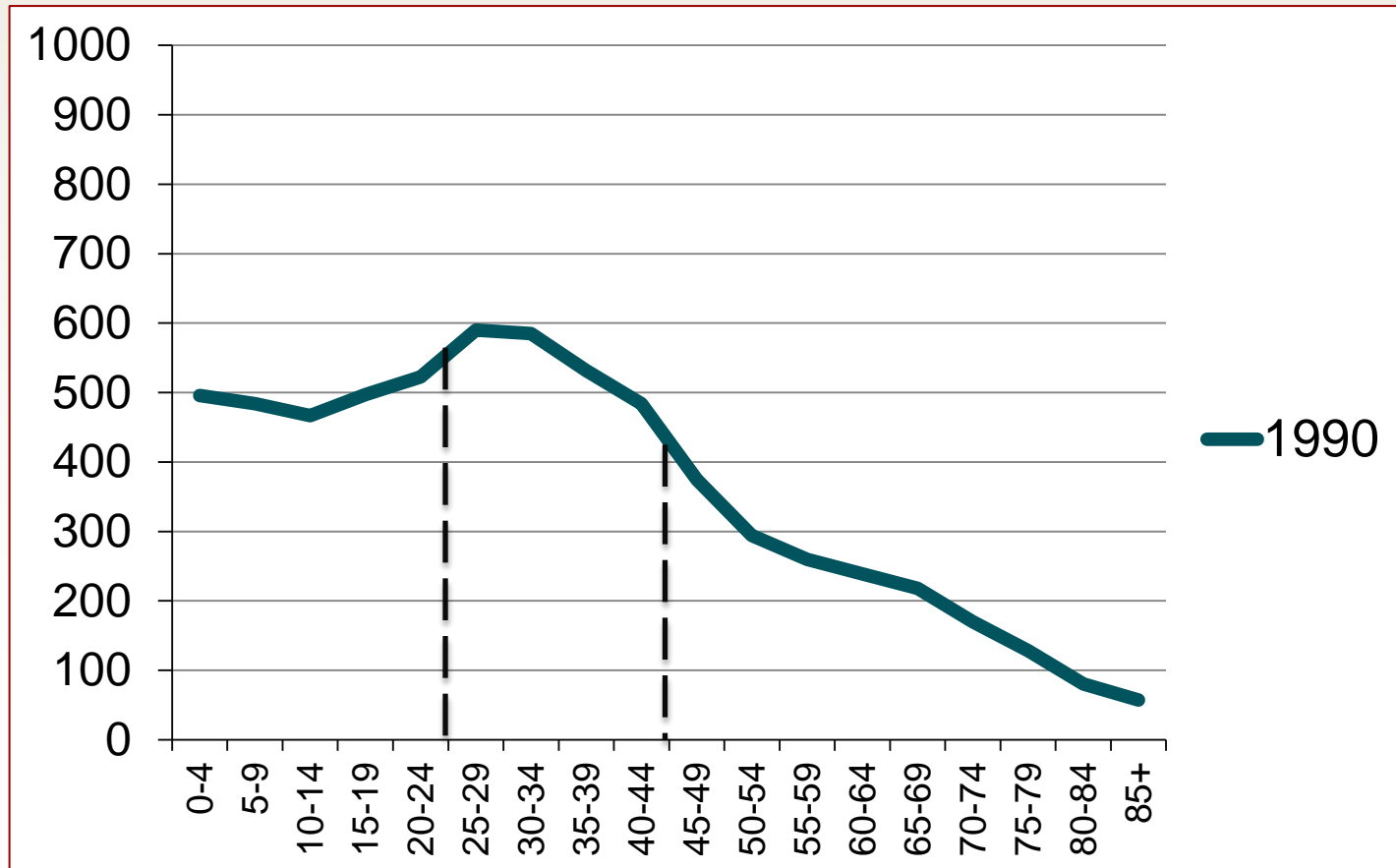


Mock Population Projection

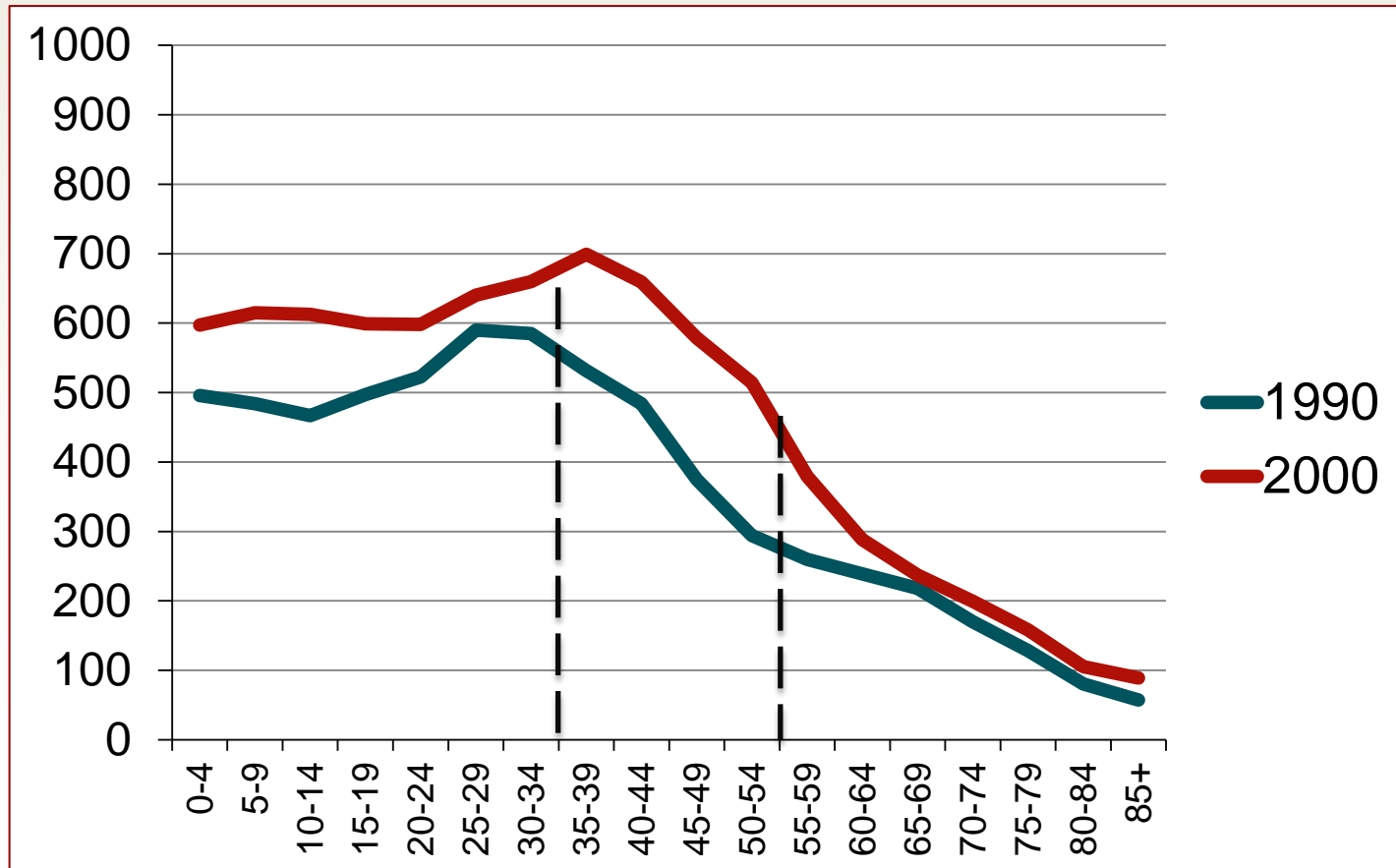
	1990	2010	2030
5 - 24	2.0	2.7	
25 - 44	2.2	2.7	2.7
45 - 64	1.2	2.4	2.7
65 - 80	0.6	0.9	2.4



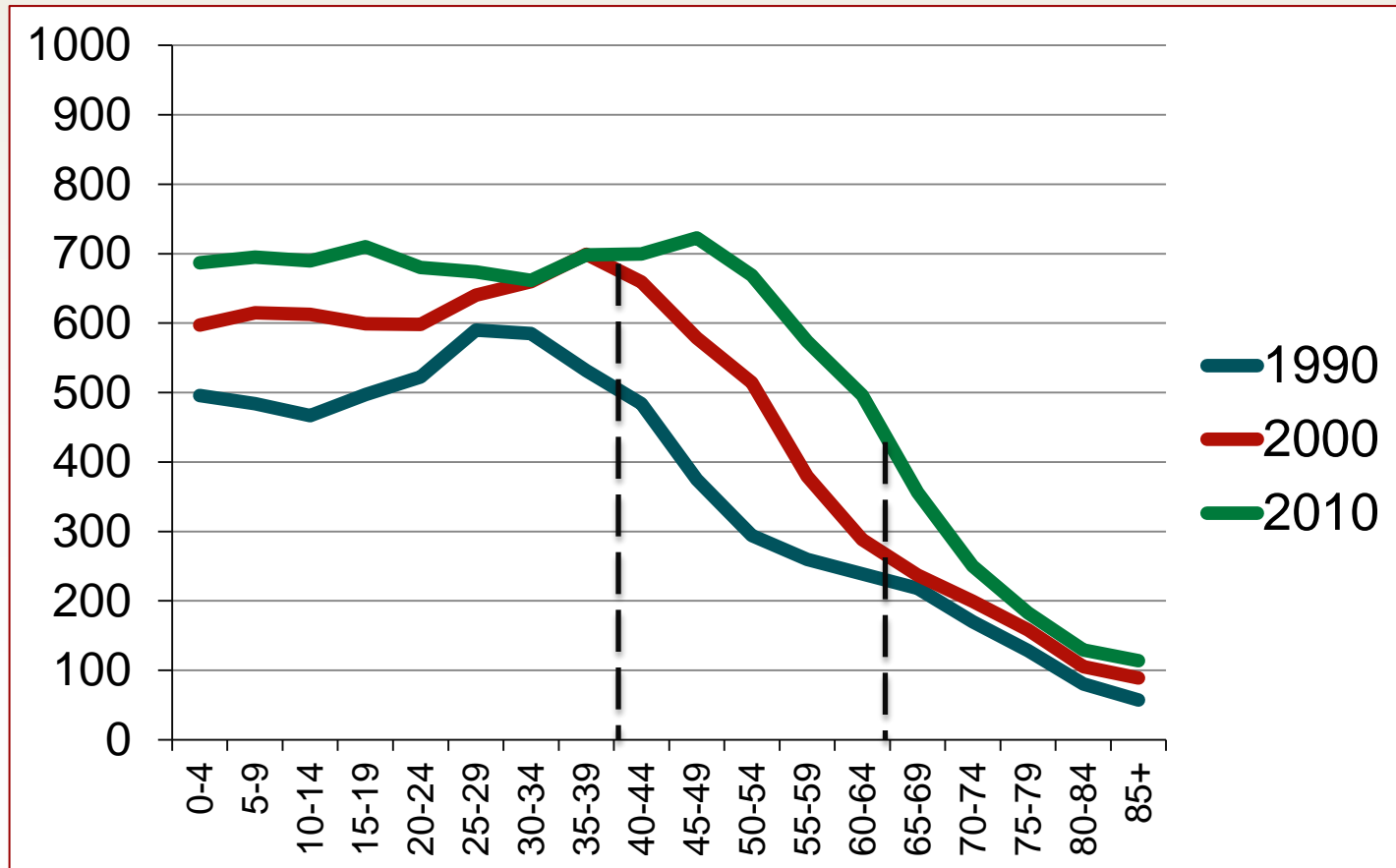
Baby Boom



Baby Boom



Baby Boom

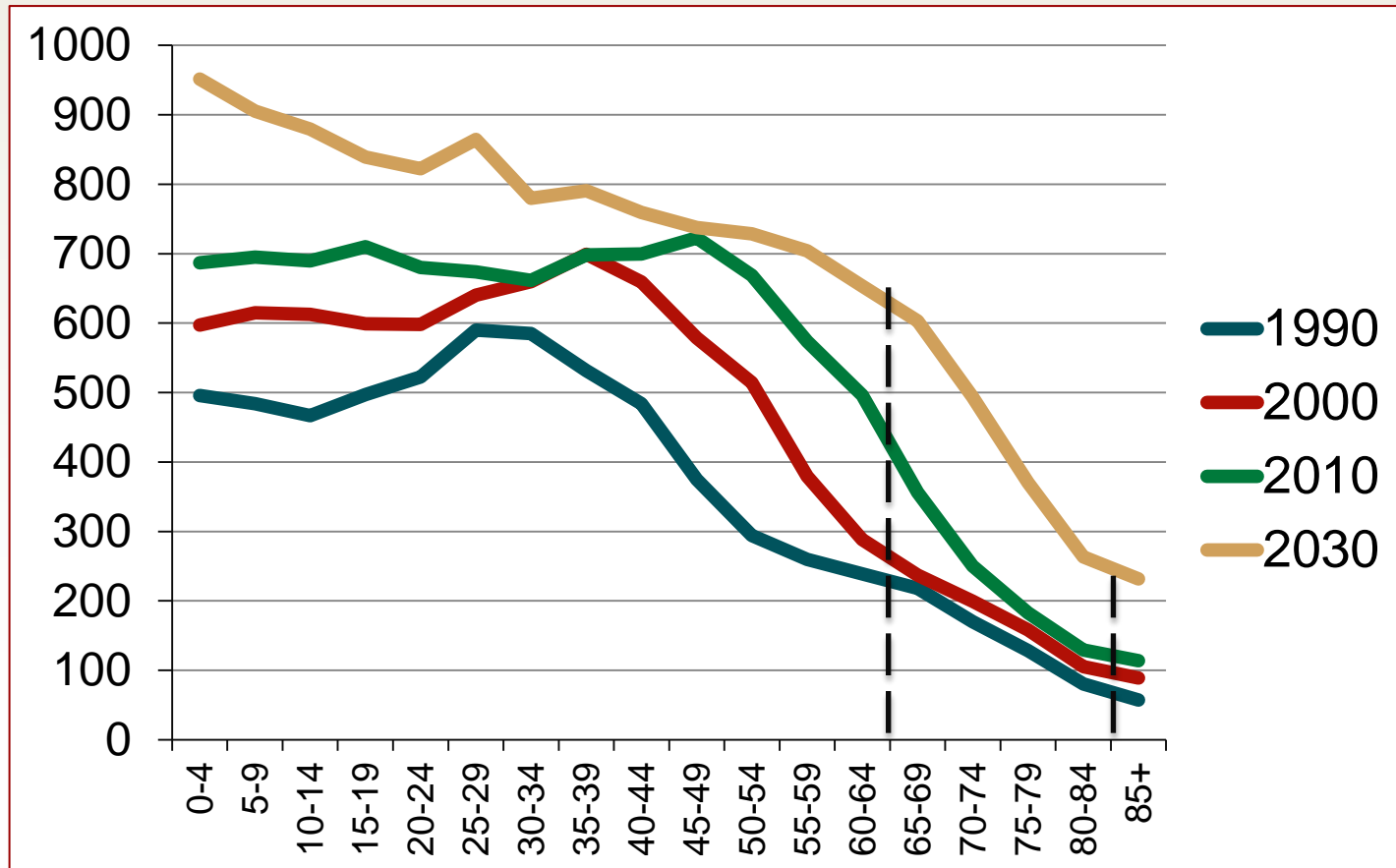


Carl Vinson Institute of Government

The University of Georgia

PROMOTING
EXCELLENCE IN
GOVERNMENT

Baby Boom



Conclusions



Rapid growth amongst
youngest and oldest
populations

Population from the
“middle ages” growing
the least



Carl Vinson **Institute of Government**

The University of Georgia

PROMOTING
EXCELLENCE IN
GOVERNMENT



**Georgia is no longer a
black and white state.**



Final Thoughts

- **Demography is destiny.**
- **“We must look at all possible futures, determine the most probable, and work toward the most *preferred*.”**
—Alvin Toffler, *Future Shock*



Contact Info

Matt Hauer



(706) 542-9369

hauer@cviog.uga.edu

www.vinsoninstitute.org